



DoIMnews

Information Exchange from the Division of Internal Medicine • Winter 2007

THE UNIVERSITY OF TEXAS
MD ANDERSON
CANCER CENTER
Making Cancer History®

Charles Cleeland, PhD, Leads National Effort to Quantify Symptom Reporting

Dr. Charles Cleeland, McCullough Professor of Cancer Research and Chair of the Department of Symptom Research, is a man on a quest. For years, he and his colleagues in Symptom Research have developed innovative methods for capturing patient report of symptoms and promoted their impact as an important source of informative data about the effects of cancer and cancer treatment, all with the ultimate goal of improving the daily lives of cancer patients and cancer survivors.

treatments is paramount not only for effectively evaluating the efficacy and toxicity of a treatment, but also for improving the quality of survivorship.

A boost from the US Food and Drug Administration in February 2006 set Dr. Cleeland on a path to create a formalized method for approaching symptom assessment in clinical trials. The FDA's draft guidance for the pharmaceutical industry on "Patient-Reported Outcome Measures: Use in Medical Product Development to Support Labeling Claims" (<http://www.fda.gov/cder/guidance/5460dft.pdf>) provided an infrastructure for addressing such patient report issues as clinical significance, study design, and statistical methods as they relate to applications for labeling claims for new products. This is especially critical for oncology treatments, where treatment-related symptoms and side effects often determine whether new agents will succeed or fail.

In response to the FDA's draft guidance, Dr. Cleeland took the initiative to convene an interdisciplinary workgroup to review the status of symptom measurement in cancer clinical trials using PROs. The workgroup identified a number of unresolved issues related to symptom measurement in

ASCPRO, page 4



Dr. Charles Cleeland

American Cancer Society Confers Lifetime Achievement Award to Charles Cleeland

Charles S. Cleeland, PhD, has been awarded the 2007 American Cancer Society Trish Greene Quality of Life Award. See page 4 for the full story.

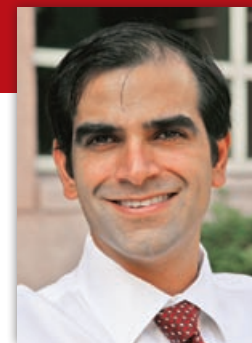
"I'm committed to preventing and reducing the severity and impact of symptoms experienced by our patients, and I believe the effect of treatment on symptom expression is a critical endpoint for interventions in oncology clinical trials," says Dr. Cleeland. "Taking into account the variations in how patients and survivors feel and how they function can inform the development of new therapies and can be crucial to making individualized treatment choices." Dr. Cleeland believes that the inclusion of patient-reported outcome (PRO) measures as means to assess differences among

Aarif Khakoo Becomes First M. D. Anderson Faculty Member to Receive Howard Hughes Medical Institute Early Career Award

Aarif Y. Khakoo, MD, MBA, Assistant Professor, Cardiology, has been selected by the Howard Hughes Medical Institute (HHMI) for the highly prestigious Physician-Scientist Early Career Award. Dr. Khakoo is the first M. D. Anderson faculty member to receive this notable honor. The HHMI is a non-profit medical research organization dedicated to biomedical research and education, and is the largest private funding source for biomedical research in the US.

HHMI developed the Physician-Scientist Early Career Award to provide early career research support to physician-

scientists by helping them make successful transitions from mentored trainees to independent physician-scientists. Through this competitive grant initiative, which was established two years ago, award recipients receive \$375,000 from HHMI over five years. This invitation-only award considers applicants who are alumni of the HHMI-NIH Research Scholars Program and the HHMI Research Training Fellowships for Medical Students Program. Dr. Khakoo was a Howard Hughes Fellow as a medical student at Columbia University College of Physicians and Surgeons.



Dr. Aarif Khakoo

Six Women, Three Men Join DoIM Faculty

As we continue to expand our clinical services and research activities, our need for new talent grows. Successful recruiting efforts have garnered us several exceptional new physicians. Please join us in welcoming the newest faculty members of the Division of Internal Medicine.

Cardiology



Iyad N. Daher, MD, Assistant Professor

Dr. Iyad Daher attended medical school at The American University of Beirut, where he also completed a transitional internship. He completed an internship, residency, and fellowship in Cardiovascular Diseases at The University of Texas Medical Branch at Galveston. During his residency and fellowship, Dr. Daher earned many awards and honors and served on several institutional committees. He has demonstrated technical expertise in the assessment and treatment of patients with ischemic/non-ischemic cardiomyopathy.

Endocrine Neoplasia & HD



Jessica Devin, MD, Assistant Professor

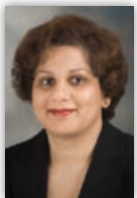
Dr. Jessica Devin earned her medical degree from Vanderbilt University School of Medicine, where she also earned an MS in Clinical Investigation and completed her Internal Medicine residency and Endocrinology fellowship. Her clinical interests include pituitary tumors, acromegaly, Cushing's syndrome, hypopituitarism, and adrenal tumors; research interests encompass cardiovascular risk in growth-hormone-deficient adults, novel therapies for acromegaly and Cushing's syndrome, and management of hypopituitarism.



Mimi Hu, MD, Assistant Professor

Upon completing her residency at Baylor College of Medicine, Dr. Mimi Hu pursued a joint Baylor-M. D. Anderson clinical fellowship that involved three years of study. The last two years of this fellowship occurred at M. D. Anderson and were research oriented. During those two years, Dr. Hu began to work with Dr. Robert F. Gagel in the area of metabolic bone disease. Dr. Hu joined our faculty after completing her fellowship. Her clinical and research interests focus on bone loss in cancer patients, hyperparathyroidism, and thyroid cancer.

Gastroenterology, Hepatology & Nutrition



Mehnaz A. Shafi, MD, Associate Professor

Dr. Mehnaz Shafi attended medical school at the Aga Khan University Medical College in Karachi, Pakistan. She completed her residency at Georgetown University and her internship at the University of Connecticut, then returned to Georgetown University for her fellowship. Her clinical interests include endoscopy, gastrointestinal cancer screening, and esophageal and gastric motility disorders; research interests include gastric electrical stimulation for chronic nausea and vomiting and refractory gastroparesis. Dr. Shafi will be facilitating the new Motility Program in Gastroenterology.



Brian Weston, MD, Instructor

Dr. Brian Weston earned his medical degree from the Royal College of Surgeons in Dublin, Ireland and completed his residency training in Internal Medicine and a fellowship in Transplant Hepatology at Indiana University. Most recently, he completed a gastroenterology fellowship at The University of Texas Health Science Center and M. D. Anderson Cancer Center. Dr. Weston has been appointed as a clinical instructor in the Department of Gastroenterology, Hepatology and Nutrition. Endoscopic ultrasound is the focus of his current training in therapeutic endoscopy.

GIM, AT & EC



Maria-Claudia Campagna, MD, Assistant Professor

Dr. Maria-Claudia Campagna recently joined the Hospitalist Section of General Internal Medicine. She is a graduate of the University of Caldas in Columbia and completed her residency training in Internal Medicine at the Methodist Hospital in Memphis, Tennessee. Before joining M. D. Anderson, Dr. Campagna worked as a Hospitalist for the Tarrant County Hospital District in Fort Worth, Texas. As a hospitalist, she will care for the medical problems of oncology patients while they are admitted to the hospital.



Holly M. Holmes, MD, Assistant Professor

Dr. Holly Holmes is a geriatrician and prior pharmacist whose clinical and research interests are centered on better prescribing for vulnerable older adults with multiple comorbidities. Dr. Holmes attended medical school at The University of Texas-Houston Health Science Center. She completed her Internal Medicine residency and her Geriatrics fellowship training at the University of Chicago.

Infectious Diseases



Bruno Granwehr, MD, Assistant Professor

Dr. Bruno Granwehr has interests in clinical research in the diagnosis, prevention, and treatment of infectious diseases. His research experience includes vaccinology and West Nile virus infection. Dr. Granwehr attended medical school at the University of Iowa Carver College of Medicine, completed his internal medicine residency at the University of Rochester (Strong Memorial Hospital, Rochester, NY), and his infectious diseases fellowship at The University of Texas Medical Branch at Galveston, where he also completed an MS in Clinical Investigation.

Pulmonary Medicine



Saadia Faiz, MD, Assistant Professor

Dr. Saadia Faiz graduated from the University of Texas Medical School at Houston, where she also completed her Internal Medicine residency, served as chief medical resident for Internal Medicine, and completed fellowships in Pulmonary Medicine and Critical Care. She followed her fellowships with an additional year dedicated to sleep research. Her areas of clinical and research interest include sleep, pleural diseases in hematologic malignancies, and pulmonary hypertension.

DoIMnews

Newsletter Committee

Robert F. Gagel, MD, Head, Division of Internal Medicine
Joseph Swafford, MD, Deputy Head, Division of Internal Medicine
Rosemary Scarfia, Division Administrator, Division of Internal Medicine
Editors Lisa M. Welsh-Skiffington, Maggie Newell

Graphic Design Maggie Newell

Contributing Writers Sheri Contella, Sandra Cunningham, Bill Evans, Rosi Gonzalez, Leendert Keus, Amy Heaton, Pam Jones, Amanda Peakes, Cathy Pugh, Ryan Thompson, Latasha Williams, and Jeanie Woodruff

News Submissions Maggie Newell, mnewell@mdanderson.org, 713-792-2609

Research, Grants, and Awards in DoIM

Cardiology



Edward T.H. Yeh, MD, Chair and Professor, led a study that reported that the protein SENP1 (Sentrin/SUMO-specific protease 1) may be key to how cells survive periods of hypoxia (low oxygen), which is necessary for tumor growth. In the November 2 issue of *Cell*, Dr. Yeh explains how this protein may provide a basis for future targeted therapies. "We believe this emerging pathway of biological regulation plays an important role in cancer development," says Dr. Yeh. "We had found earlier that high levels of SENP1 can be found in prostate cancer, but we didn't understand why. Now, knowing that it regulates the entire hypoxic response, we believe it must play a role in other kinds of cancers."

Researchers believe that tumors adapt to hypoxia caused by their rapid growth by activating molecules that help build new blood supplies. Dr. Yeh and his study team found that SENP1 is needed for this process and that inhibiting it might be a way to arrest tumor growth.



Juan Carlos Plana, MD, Assistant Professor, presented at the World Congress of Echocardiography and Vascular Ultrasound in June and to the Scientific Session of the European Association of Echocardiography in December, discussing state-of-the-art evaluation techniques that use echocardiography to study the hearts of cancer patients. These innovative methods more effectively evaluate certain heart functions, including the calculation of

ejection fraction, which must be absolutely accurate because the decision to stop or continue chemotherapy is based on this evaluation. Dr. Plana also illustrated how to visualize cardiac tumors using echocardiography in three dimensions to better detect cardiac tumors in cancer patients, and discussed special methods needed to detect at an earlier stage the toxicities experienced by these patients.

Dermatology



Susan Chon, MD, Assistant Professor, received a \$20,000 gift from the Doss family. This gift supports Dr. Chon's work on skin cancer screening projects at local college campuses, including the University of Houston and the University of St. Thomas.

GIM, AT & EC



Sai-ching Jim Yeung, MD, PhD, Associate Professor, has been awarded a Department of Defense Synergistic Idea Award grant for his submission titled, "The Impact of Diabetes Treatment on Survival in a Breast Cancer/Diabetes Model." The project began in November and seeks to determine whether the type II diabetic state alters the tumor biological processes and whether any specific treatments of diabetes improve the survival of mice with breast cancer and diabetes. The grant is for two years and provides more than \$750,000.

Symptom Research



Guadalupe Palos, DrPH, LSMW, RN, Assistant Professor, presented, "Bringing Cures to All Patients: Addressing Diversity in Clinical Trials" at the recent Oncology Nursing Society 32nd Annual Congress. Dr. Palos addressed the ongoing issue of recruitment and retention of under-represented groups in cancer clinical trials. The problem of healthcare disparity, which includes unequal access to advanced treatment options and to clinical trials, is

affected by patient factors, such as cultural, geographical, language or age differences, being uninsured, underinsured, poor, or health illiterate, and having inadequate education, housing, or environmental support; and by non-patient factors, such as stereotyping, cultural biases, and clinical decision-making techniques. Underrepresentation of minorities in cancer clinical trials restricts researchers' ability to generalize research findings and affects clinical practice. Possible strategies to better serve these patients include improved communication during the informed-consent process and patient navigation programs.



Lori Williams, PhD, RN, OCN, AOCN, Instructor, spoke on the impact of third-party payment policy on clinical trials enrollment at a National Public Forum convened by the Agency for Healthcare Quality and Research (AHRQ) and Centers for Medicare and Medicaid Services (CMS) in September. Dr. Williams' experience with clinical trials has given her insight into this topic, which is both timely and important for healthcare-policy decision making.



Xin Shelley Wang, MD, MPH, spoke on the need for research into the mechanisms underlying cancer-related fatigue (CRF) at the ASCPRO Steering Committee meeting in October. Such research could provide clear intervention targets in fatigue trials, but well-designed studies with good methodology are lacking in this area. Dr. Wang discussed barriers to good CRF research, along with a number of possible solutions, including IL-6, to test for specific causes of CRF.

Upcoming Conferences '08

Mechanisms and Treatment of Cancer-related Symptoms Conference, January 24-26, 2008.

 See www.mdanderson.org/conferences

Fourth International Conference: Ubiquitin, Ubiquitin-Like Proteins, and Cancer, February 7-9, 2008.

 See www.sentrin.org

Bone Disease Program of Texas Scientific Retreat and Research Competition, April 18, 2008.

 See www.bonediseaseprogram.org

Division of Internal Medicine Research Retreat, April 25, 2008.

 See www.mdanderson.org/conferences

The **BIG** Survey is coming!

BIG
Survey

January 11

You will receive instructions on how to access the survey

January 14

Survey begins! The survey link is sent to all employees.

January 25

Survey closes!

American Cancer Society Confers Lifetime Achievement Award to Dr. Charles Cleeland, Chair, Symptom Research



Charles S. Cleeland, PhD, McCullough Professor of Cancer Research and Chair of Symptom Research, has been awarded the 2007 American Cancer Society Trish Greene Quality of Life Award in honor of his lifelong commitment to improving the quality of life of patients and his achievements in the area of symptom research. This prestigious award is given to individuals who best exemplify the values and vision of the late Patricia Greene, RN, PhD, who worked tirelessly to better the lives of persons with cancer and their families and to promote excellence and compassion in cancer care, with an emphasis on a multidisciplinary team approach.

Dr. Cleeland played a central role in the development of the M. D. Anderson Symptom Inventory (MDASI) and has been awarded numerous research grants from the American Cancer Society and the National Institutes of Health to broaden his study of pain management and symptoms associated with cancer treatment. His recent research efforts focus on quantifying the burden of multiple symptoms for cancer patients, identifying underlying mechanisms of cancer symptoms, and clinical trials in symptom management.

ASCPRO, continued from page 1

cancer, including the development of measurement and endpoint models of symptom assessment, a review of complex symptoms like fatigue and emotional distress, and specific measurement issues such as appropriate recall period, simultaneous measurement of multiple symptoms, development and validation of new and existing scales, and validation of translations of existing scales.

"We knew that addressing these issues would be a long-term process, so we created a permanent working group on symptoms as outcomes in cancer clinical trials," notes Dr. Cleeland. "We gave our group the name ASCPRO, which stands for Assessing the Symptoms of Cancer using Patient-Reported Outcomes."

ASCPRO's mission is to generate evidence-based recommendations for the assessment of patient-reported cancer-related symptoms and the use of that information to facilitate clinical research and decision-making. ASCPRO is co chaired by Dr. Cleeland, along with Dr. Jeff Sloan, Professor of Oncology and Health Sciences Research at Mayo Clinic. "Jeff and I felt strongly that ASCPRO should include not only research-

ASCPRO is among the first working groups to treat symptom reporting as a primary focus and to make recommendations about standards and best practices for capturing changes in patient symptom experience in clinical research.

ers and clinicians, but also other stakeholders in optimal symptom assessment," says Dr. Cleeland, "such as patient advocates, representatives from governmental agencies, those who pay for symptom control and monitor quality of care, and those who produce products that treat cancer or palliate cancer-related symptoms."

ASCPRO is developing a series of workshops to explore the use of PROs for measuring potential symptom reduction benefits in cancer clinical trials. "Our first job was to prioritize a list of common cancer-related symptoms for which there already exists substantive but scattered literature—and for which we thought we could most likely reach consensus on methods of assessment," Dr. Cleeland notes. Once the symptom list was established, the group set goals to be pursued for each symptom, related to treatment, measurement, interpretation, and feasibility of assessment:

- Construct a measurement model that identifies relevant domains and describes the relationships to other clinical outcomes, synthesized from the current literature and the expert opinion of the committee.
- Summarize available assessments and approaches to measurement, including operational definitions of clinical significance for the measurement model. This includes a delineation of when unidimensional versus multidimensional assessment of the symptom is indicated.
- Develop models of potential "labeling claims" for consideration by the FDA. These labeling claims—such as, "treatment x is associated with less symptom burden than treatment y"—help inform patients and those who care for them about the clinical benefits and risks of a treatment.
- Evaluate potential incorporation of symptom report in definitions of disease progression.

- Present alternative trial designs to answer questions related to the specific symptom or symptom sets under review.

"The first symptom we addressed was fatigue," says Dr. Cleeland. "We commissioned a task force to address the goals we had set for each symptom. The fatigue task force met a couple of times during the year and otherwise communicated via teleconference, web postings, and e-mail. The group made its formal report to the ASCPRO steering committee this past October." Since then, new task forces have begun the process for evaluation of treatment-related cognitive impairment and the effects of treatment on multiple symptoms.

The issuance of the FDA draft guidance for using PROs in labeling claims provided a needed impetus for careful scientific evaluation of the best way to gather data describing the symptom experience of cancer patients. ASCPRO is among the first working groups to treat symptom reporting as a primary focus and to make recommendations about standards and best practices for capturing changes in patient symptom experience in clinical research.

The formation of ASCPRO is simply Dr. Cleeland's most recent endeavor in a career committed to improving the quality of life of patients. His lifetime of cutting-edge achievements in the area of symptom research was recently recognized with the receipt of the 2007 American Cancer Society Trish Greene Quality of Life Award (see inset). In his long career, Dr. Cleeland has seen increasing emphasis on capturing patient report as essential to cancer care and to evaluating outcomes. In fact, the FDA has consistently defined clinical benefit both in terms of survival and how patients feel and function. As Dr. Cleeland points out, "Measuring how patients feel is much harder than assessing survival. But we have now developed the science of symptom assessment to the point where important clinical and regulatory decision-making can be informed by what our patients experience."

Symptom Research: Want to Know More?

The Department of Symptom Research has received attention of late in several M. D. Anderson publications, including the 2005 Annual Report, Conquest, and Network.



To access these articles, visit the Symptom Research Web site at www.mdanderson.org/departments/prg and click on "News & Progress."



To register for the January 24-26 Mechanisms and Treatment of Cancer-Related Symptoms conference, visit www.mdanderson.org/conferences.



To obtain information about ASCPRO and to view input from the fatigue task force, visit www.ascpro.org.

Pulmonary Medicine and Endocrine Neoplasia Host Investigators from Sister Institution Yonsei University Medical Center

The Division of Internal Medicine is pleased to welcome two investigators from Yonsei University Medical Center: **Kyubo “Laura” Kim, MD**, has joined Pulmonary Medicine, and **Min Huan Kim, MD**, will join Endocrine Neoplasia & HD in February.

Dr. Kyubo Kim will work with Burton Dickey, MD, focusing on airway inflammation and mucin research. Dr. Min Huan Kim will work with Robert F. Gagel, MD, in identifying the genes involved in medullary thyroid carcinoma utilizing high-density CGH.

Yonsei University Medical Center is considered the first modern medical center established in Korea, and Yonsei Cancer Center is renowned as the first institution in Korea that provides cancer care with a multidisciplinary

approach supported by strong basic and translational research in oncology. Six investigators from Yonsei University currently are at M. D. Anderson.

The Department of Extramural Programs has established sister institution relationships with 17 medical centers around the world. Sister institution relationships are developed only with institutions that have similar facilities and staff students, clinicians, and researchers that share our level of commitment. These relationships expand the reach of our mission through collaborative research and education and are playing an increasingly important role in research efforts throughout M. D. Anderson. They also offer new investigators the opportunity to work in world-class institutions and launch their careers with the guidance of experienced faculty.

Serving the Underserved: Doing Well by Doing Good

Symptom Research Clinical Trials Focus on Houston’s Underserved Minority Cancer Patients

Guadalupe Palos, DrPH, LSMW, RN, Assistant Professor, Symptom Research, knows a thing or two about how a patient’s cultural background affects his or her cancer experience from diagnosis to death. Dr. Palos developed an interest in underserved community populations during her days as a social worker in Houston’s North Side, East End, and Fifth Ward, where she worked with families in crisis who lived at or below the poverty level. These experiences opened her eyes to the fact that we do not have to live in third-world countries to see the negative influence of poverty on peoples’ lives: it’s right here in Houston, in the shadows of high rise buildings and pricey lofts.

As she began her medical career, she participated in several studies related to pain and pain relief that inspired her to learn more about pain management, assessment, and research. She became particularly interested in the side-effects experienced by patients who were given opioids and adjunct medications for pain relief, and in how the side-effects influenced quality of life, especially for patients who are ethnic minorities and underserved.

Acting on her concern for these patients, Dr. Palos combined her experiences and interests to create a research program that integrates disparities, minority populations, and public and patient communities within the emerging area of symptom research. She has developed symptom research collaborations with Lyndon B. Johnson (LBJ) General Hospital and Ben Taub General Hospital, the two hospitals of the Harris County Hospital District. The staff at both facilities have great respect for and interest in her research because it involves both patients and caregivers, targets underserved ethnic and racial groups, and provides research on physical and affective symptoms. Nursing staff in these hospitals say that the research conducted by Dr. Palos’ team has raised the awareness of fellows and attending staff to the needs of these populations.

The success of her research program led her to apply for federal funding to further her efforts. In 2005, Dr. Palos was awarded a **K07 Professional Development Award** for a study titled “Effects of Cancer Symptoms on Caregivers.” This longitudinal study focuses on patients with advanced lung or breast cancer, most of whom have severe symptoms. The study examines symptom burden in patients and their caregivers, who experience symptoms related to the burden of caregiving. This becomes all the more important as the number of long-term cancer survivors increases.

The study uses a combination of semistructured interviews and validated questionnaires. Says Dr. Palos, “With this population, we often have patients who cannot read in English or even the language of their country of origin, so we offer to read the questionnaires to them—and they appreciate that.” They also like to tell stories about their symptoms rather than assign



Arlene Nazario, MD, Clinical Assistant Professor, GI Medical Oncology (left) and Araceli Garcia-Gonzales, MD, Postdoctoral Fellow, Symptom Research (right) help an LBJ patient to complete a study questionnaire.

numbers to their symptoms. “In our preliminary analysis,” relates Dr. Palos, “we found that subjects might circle a 0 for ‘no pain’ but then tell us in their story that they had to go to work despite their severe pain. They then go on to describe how the pain interferes with their daily routine. As a clinician, I recognize that ‘no pain’ is quite different from the pain being described by the patient. So, it is important to combine both methods in a clinical setting and a research setting.”

It also is rewarding to see the reaction from the caregivers when they are asked to share their stories. Dr. Palos remembers one Latino man who was the caregiver for his wife, who had advanced cancer. The man held back his tears as he shared the tremendous challenges he faced in helping his wife through the initial diagnosis, treatment, and recurrence of her cancer. He explained how he tried to help his wife deal with her pain as her disease progressed. Throughout the interview, he kept repeating that this was the “first time anyone has ever asked how I felt.”

Dr. Palos finds that patients from diverse ethnic and racial backgrounds do want to participate in research. They want to be given choices, to be involved in decision-making, and to be informed about the studies in a respectful and positive manner. Core values such as dignity, respect, collectivism, and altruism are very much alive and strong in these populations. Her research team strives to communicate understanding of these values during conversations about the studies and during the informed-consent process. They also try to be flexible with recruitment and follow-up procedures. For example, if a patient or caregiver misses an assessment time-point because they cannot take off from work, the team will collect the data through telephone calls or home visits. The home visits have proven to be very successful and help minimize missing data.

“Every member of our research team understands that there are tremendous challenges in working with this population,” says Dr. Palos, “but the challenges don’t keep us from moving forward. As long as they say ‘yes’ to our research invitations, we’ll keep coming back.”

January

- 1 **Institutional Holiday**
New Year's Day
- 7 **DoIM Grand Rounds**
Cancelled
- 14 **DoIM Grand Rounds**
David Weinberg, MD, MSC
Fox Chase Cancer Center
"Predictive Genetic Testing:
A Better Way to Stratify Risk?"
8:00 a.m. - 9:00 a.m., FC1.2002
- 15 **Bone Disease Program of Texas
Seminar Series**
Roberto Civitelli, MD
Washington University School of
Medicine
"Connexins in Post-natal Skeletal Growth
and Maintenance"
11:00 a.m. - Noon, FC1.2002
- 21 **Institutional Holiday**
Martin Luther King, Jr. Day
- 24 **Through the Lens of Diversity**
8:30 a.m. - 12:30 p.m.
R11.1100, Rooms 7 & 8
Register for this class through the
Education Center
- 24-26 **Mechanisms and Treatment of Cancer-
related Symptoms Conference**
Renaissance Houston Hotel
www.mdanderson.org/conferences
- 28 **DoIM Grand Rounds**
Carmen Escalante, MD
Shelley Wang, MD, MPH
M. D. Anderson Cancer Center
"Cancer-related Fatigue: Current Status of
Research and Management"
8:00 a.m. - 9:00 a.m., FC1.2002

February

- 7-9 **Fourth International Conference:
Ubiquitin, Ubiquitin-like Proteins,
and Cancer**
M. D. Anderson Cancer Center
R11.1400, Hickey Auditorium
www.sentrin.org
- 12 **DoIM/DoCM Combined
Grand Rounds**
Manoop Bhutani, MD
Linus Ho, MD
M. D. Anderson Cancer Center
"Endoscopic Ultrasound (EUS) in the
Staging of GI Cancers"
8:00 a.m. - 9:00 a.m., R11.1400
Hickey Auditorium
- 18 **DoIM Grand Rounds**
Victor Lavis, MD
Marta Davila, MD
M. D. Anderson Cancer Center
"Non-alcoholic Fatty Liver Disease and
the Metabolic Syndrome"
8:00 a.m. - 9:00 a.m., FC1.2002
- 25 **DoIM Grand Rounds**
Speaker and presentation to be announced
8:00 a.m. - 9:00 a.m., FC1.2002

A few words from Dr. Gagel



The Division of Internal Medicine focuses on the care of patients with medical problems related to cancer or its treatment. As internists, we are profoundly aware that patients who present with medical problems have a variety of distinctive symptom complexes. We use the symptom complexes to provide us with guidance to make the correct diagnosis and to initiate an appropriate treatment. What we often lose sight of is the impact that these symptoms have on our patients.

Three years ago, the Department of Symptom Research joined the Division of Internal Medicine. Although I did not immediately sense the importance of this addition, I have gained profound respect for the department and the importance of quantitating specific symptoms and symptom-complexes, and the effort to understand the biologic mechanisms responsible for symptom expression. Symptoms not only are of great help to us in directing appropriate therapy, but also are a source of great distress for our patients both during and after treatment.

Dr. Charles Cleeland and his investigators are committed to developing a validated methodology for measuring a broad spectrum of symptoms. This is not easy, necessitating not only the development of a validated strategy to quantitate symptoms, but also a broad consensus across the United States and other parts of the world related to specific symptoms. To this end, Dr. Cleeland has organized a national ef-

fort to develop agreement on the methodology used to measure individual and multiple symptoms in clinical research (see page 1).

This effort involves stakeholders from the NCI and other governmental groups, regulatory agencies, and industry who use symptom measures in cancer clinical trials. Dr. Cleeland is no stranger to this type of endeavor. Previously, he developed surveys, such as the Brief Pain Inventory and the M. D. Anderson Symptom Inventory, that have been validated in multiple cultures and languages and are widely used across the developed and developing world.

Although Dr. Cleeland by nature is quiet and unassuming, his research is widely respected. He recently was awarded the Trish Greene Quality of Life Award presented by the American Cancer Society (see page 4) for a body of work that he and his colleagues in Symptom Research have performed over the past quarter century. We believe that his expanded focus on quantifying and surveying the multiple symptoms associated with cancer or its treatment, will equal or exceed his meritorious body of work related to pain.

This issue of DoIMNews focuses on the contributions of the Department of Symptom Research. We are proud to have Dr. Cleeland and his group as members of the Division and look forward to their future contributions

Promotions

Cardiology

S. Wamique Yusuf, MD, FACC, Associate Professor
Sui Zhang, MD, PhD, Assistant Professor
Amy Heaton, Project Director

Dermatology

Kerri Fernandes, Research Interviewer
Olga Heinle, MHS, CCRP, Manager, Clinical Protocol
Administration

Endocrine Neoplasia & HD

Tao Hai, Senior Research Assistant
Amber Owens, Data Analyst, Diabetes Management

GIM, AT & EC

Shu-Wei Gao, MD, Associate Professor
Jerry Henderson, MD, Associate Professor
Carol Looney, Program Manager, Translational
Research
Andrea Price, Clinical Studies Coordinator
Kausha Robinson, Supervisor, Research Data
Coordination
Margaret Row, MD, Associate Professor

Infectious Diseases

Elizabeth Frenzel, MD, MPH, Associate Professor

Symptom Research

Karen Anderson, PhD, MPH, Associate Professor
Qiuling Shi, PhD, Instructor

Welcome

Dermatology

Priya Richards, Research Assistant I

Endocrine Center

Kimberly Dotter, RN, Clinical Nurse
Keyeonna Gray, Receptionist

Endocrine Neoplasia & HD

Paola Gonzales, PA, Physician Assistant
Kari Hartmann, PA-C, Physician Assistant
Daisy Izaguirre, Graduate Research Assistant
Celia Levesque, MS, Advanced Practice Nurse
Saurabh Sethi, Graduate Research Assistant
Wen Zhu, MD, Postdoctoral Fellow

Gastroenterology, Hepatology & Nutrition

Debbie Chow, Manager, Clinical Protocol
Cheryl Curry-Karian, Physician Assistant
Christine Fark, RN, Research Nurse
Judith Ferris, Administrative Assistant
Rose Guevara, Senior Administrative Assistant
Lilian Mugartegui, Clinical Research Program
Coordinator

GIM, AT & EC

Yvonne Alfred, Senior Administrative Assistant
Monica Blanco, Operations Manager
Silda Castillo, Senior Secretary

Marie Coleman, Senior Financial Analyst
Melissa Cruz, Administrative Assistant
Rebeca Maldonado, Senior Research Data Coordinator
Angie Martinez, Senior Secretary
Sonia Rodriguez, Research Data Coordinator
Catherine Sheppard, Program Manager

Infectious Diseases, Infection Control & Employee Health

Kathy Smith, Physician Assistant

Internal Medicine Center

Judy Bounds, MSN, RN, Diabetes Education
Coordinator
L. Ruth Roach, RN, Clinical Nurse

Pulmonary Medicine

John Coppens, MD, Postdoctoral Fellow
Kyubo Kim, MD, Postdoctoral Fellow
Derek Larson, Research Assistant I
Farah McCorvey, Research Assistant I

Symptom Research

Terri Jamison, BSN, RN, Medicine Department
Administrator
Kai-Ping "Eric" Liao, Data Analyst
Donna Malveaux, Senior Research Data Coordinator
Katherine Ramsey, Senior Research Data Coordinator

Awards, Honors, and Events

Veronica Brady, MSN, APRN, Advanced Practice Nurse, Endocrine Neoplasia & HD, was nominated and selected by a committee of her peers as an M. D. Anderson 2007 *Outstanding Patient Educator*. Veronica was honored at the Awards Reception for Outstanding Patient Educators, held October 25.

Manoop S. Bhutani, MD, FASGE, FACG, FACP, Professor, Gastroenterology, Hepatology & Nutrition, has been selected as the Chair of the International Relations Committee of the American College of Gastroenterology.

Madeleine Duvic, MD, Professor, Dermatology, has been elected Vice President Elect of the Society of Investigative Dermatology and appointed to its board. Dr. Duvic also has been appointed to the American Academy of Dermatology Ad Hoc Task Force.

Rodolfo C. Morice, MD, FCCP, Section Chief and Professor, Interventional Pulmonology, and Deputy Chair, Pulmonary Medicine, received the *Distinguished Service Award* at the 2007 American College of Chest Physicians (ACCP) Conference convocation ceremony, held October 21. This award, conferred on a discretionary basis by the Board of Regents, recognizes ACCP members who have demonstrated dedicated service and untiring commitment to the College. Since its establishment a decade ago, only two recipients have been honored with this award.

Guadalupe Palos, DrPH, LSMW, RN, Assistant Professor, Symptom Research, recently was honored as the *Outstanding Health Disparities Researcher* by the Center for Minority Health at The University of Texas M. D. Anderson Cancer Center. This award, presented during National Minority Cancer Awareness Week, recognizes new investigators for their commitment to advancing the science in health disparities through innovative research and community outreach activities to underserved populations.

Cheryl Perego, MT, ASCP, Supervisor, Infection Control, was awarded the *Staff Educator of the Month* award for July 2007.



DoIM Dominates the 2nd Annual Clinical Safety & Effectiveness Awards

At the 2nd Annual CS&E Awards and Recognition Dinner, held September 7, DoIM faculty and staff took the first and third place poster presentation awards. **Javier Adachi, MD**, Assistant Professor, Infectious Diseases, and **Cheryl Perego, MT, ASCP**, Supervisor, Infection Control, won first place for their presentation, "Antimicrobial Stewardship Project in the Intensive Care Unit." **Carmen E. Gonzalez, MD, FACP**, Assistant Professor, GIM, AT & EC; **Kenneth Rolston, MD**, Professor and Deputy Chair, Infectious Diseases; and Tami Johnson, PharmD, Pharmacy Clinical Programs, won third place for their presentation, "Compliance and Documentation with Established Pneumonia Indicators."

Also at the dinner, four DoIM faculty were inducted as CS&E Fellows. **Michael R. Migden, MD**, Assistant Professor, Dermatology; **Tri Nguyen, MD**, Associate Professor, Dermatology; **Margaret Row, MD**, Medical Director, Emergency Center, and Assistant Professor, GIM, AT & EC; and **Joseph Swafford, MD**, Deputy Head, Division of Internal Medicine, and Professor, Cardiology were conferred these Fellowships in recognition of and appreciation for their exemplary service and contributions to quality and patient safety efforts.

CS&E coursework is designed to train physicians and other senior leaders in improvement. The course seeks to integrate quality and safety concepts into the way work is done every day and to enhance organizational knowledge through disseminated successful practices. The CS&E is a practical, in-depth course for health care professionals who are engaged in the management of clinical and non-clinical processes. The goal is to engage individuals in clinical leadership positions in improvement initiatives aligned with the institution's strategic goals.



For more information, visit
<http://inside.mdanderson.org/education/csetraining/>

Milestones

Rosi Gonzalez has been selected as a member of the University of Texas M. D. Anderson Cancer Center Diversity Council. In her new role, Rosi will actively work with other members of the Diversity Council in making recommendations to senior leadership on how best to promote diversity across the institution.

Maria Sanchez, Senior Coordinator, Research Data, Symptom Research, recently earned her certification as a Registered Nurse.



Fall 2007 Employee Service Awards

5 years

Robert Bresalier, MD, Gastroenterology, Hepatology & Nutrition
James Byrd, PhD, Gastroenterology, Hepatology & Nutrition
Roy Chemaly, MD, Infectious Diseases
Londa Cravey, Endocrine Neoplasia & HD
Jessica Foreman, Gastroenterology, Hepatology & Nutrition
Cal Gary, Internal Medicine Center
Anna Giocondo, MD, GIM, AT & EC
Peter T. H. Lee, Gastroenterology, Hepatology & Nutrition
Linda Madison, Internal Medicine Center
Jacob Martinez, Emergency Center
Nachman Mazurek, PhD, Gastroenterology, Hepatology & Nutrition
Jana Mills, Cardiology
Hanne Ozolins, Cardiology
Tina Pena, Cardiology
Amy Shadle, Dermatology
Khanh Vu, MD, GIM, AT & EC
Jeanie Woodruff, Symptom Research
Sui Zhang, MD, PhD, Cardiology

10 years

Alicia Arciniega, Gastroenterology, Hepatology & Nutrition
Tony Lam, PhD, GIM, AT & EC
Marilyn Morrissey, Symptom Research
Sai-ching Jim Yeung, MD, PhD, GIM, AT & EC

15 years

Gilbert Cote, PhD, Endocrine Neoplasia & HD
Cuong Nguyen, Endocrine Neoplasia & HD
Lourdes Padua, Emergency Center
Christine Vedomey, Pulmonary Medicine

20 years

Elsa Acevedo, GIM, AT & EC
Delores Feller, Infectious Diseases
Elizabeth Hudson, Employee Health & Well-being
Rosario Mante, GIM, AT & EC
Paul Onuh, Emergency Center

25 years

Terri Garza, Cardiology
Shelia Graham, Internal Medicine Center
Shirley Jones, Internal Medicine Center
Catherine Pugh, Endocrine Center
Norma Rincon, Cardiology Laboratory
Georgia Thomas, MD, Employee Health Services

noteworthy

A Journey to Citizenship

Rosi Gonzalez, Office Manager, Infectious Diseases, Became a U.S. Citizen in September

When Rosi Gonzalez arrived in the United States nine years ago, little did she know of the challenges she would face in pursuit of U. S. citizenship. Rosi explained, "You cannot become a citizen unless you are a permanent resident, and you cannot become a permanent resident unless you marry a U.S. citizen or obtain a sponsor, such as a company." Rosi fell in love with and married a U.S. citizen, who then submitted the requisite paperwork. And what paperwork there is: several multipart forms and pieces of documentation, fingerprints and photographs, filing and translation fees...the list seemed endless. Rosi and her husband pressed on and completed the permanent resident process, which took more than two years. Then the long wait began: a person must be a permanent resident for five years before becoming eligible to become a citizen, a process involving another set of forms, documentation, fingerprints, photographs, fees—and tests! Rosi took tests in history, civics, reading, and writing, and then took an oral exam. The tests are given iteratively, and candidates cannot take the next test until they pass the current test. But once she passed her tests and an Immigration Officer evaluated her application, all Rosi's efforts were rewarded with the words, "Congratulations! We are going to make you a citizen of the United States." Said Rosi, "That's when your tears come. There are no words to express the emotions and feelings that come with it." On September 19, Rosi, accompanied by Lisa Hafemeister, Department Administrator, Infectious Diseases, arrived at an area courthouse at 7:00 a.m. for the citizenship ceremony that would begin at 10:00 a.m. Rosi took her oath at noon and two hours later received her Certificate of Naturalization (photo top). "You have to persist to reach your dreams because they don't come to you," said Rosi. "Nothing is free; there are prices that we have to pay if we want to go far. Don't shoot for the stars—your desires should go beyond the stars. It may take a day, a month, or years for your dreams to come true, but if you persevere, you will go beyond the stars." Congratulations, Rosi!



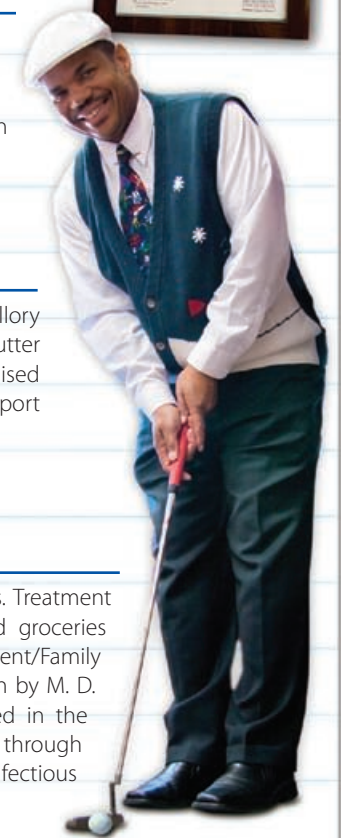
Diversity Project Wins Accolades

On August 29, the DoIM celebrated its receipt of an **M. D. Anderson Innovative Program Award** (photo above) for the 2007 DoIM Diversity Festival. The Diversity Festival came out of the division's three-year Diversity Project plan, which was developed in response to a Needs Assessment Survey distributed in June of 2004 and focus group feedback generated in 2005. We not only received institutional recognition for our efforts, but also achieved our FY07 Anderson Award goal. The Division of Internal Medicine FY08 Anderson Award Goal will be detailed in the coming weeks.



Dr. Swafford Demonstrates Driving Dexterity in Charitable Event Benefiting M. D. Anderson Cancer Center

Joseph Swafford, MD, Deputy Head, Division of Internal Medicine, was in the swing of things at the 2007 Marshall Guillery Memorial Employee Co-Ed Golf Tournament. His golfing prowess won him the closest to the pin contest—and a new putter (photo right). A component of the State Employee Charitable Campaign, the tournament took place October 27 and raised over \$3,400 for M. D. Anderson Cancer Center. These funds will be used to further M. D. Anderson's mission and support research and education efforts throughout the institution.



Adopt-A-Patient/Family 2007: DoIM Raises Over \$1,600

The holidays can be challenging for cancer patients and their families. Treatment and travel expenses can mean that little remains to buy gifts and groceries during what should be a happy time. Since 2002, the Adopt-A-Patient/Family program has identified patients in need and put them up for adoption by M. D. Anderson employees. This year, three DoIM departments participated in the program and raised \$1,640. The DoIM Administrative Office raised \$625 through an online silent auction (photo left), and members of Dermatology and Infectious Diseases contributed \$565 and \$450, respectively.