

# MD Anderson Children's Cancer Hospital FY19 At-a-Glance



THE UNIVERSITY OF TEXAS

MD Anderson  
Cancer Center

Children's Cancer Hospital®



## On the cover

Eli dressed as a Ghostbuster for the 2019 Mueller's Monster Mash Halloween Parade. He's accompanied by Kasey "The Art Lady" Marsh, an artist and supervisor for the Children's Art Project, and Diesel, the Houston Dynamo mascot. Generous donors provide costumes for the annual event, and MD Anderson employees hand out candy, treats and giveaways as patients and their siblings trick-or-treat while making their way to the grand finale — a Halloween-themed party.

The mission of the Children's Cancer Hospital is to bring hope for the future to pediatric patients and their families through clinical expertise, cutting-edge therapies, research, training tomorrow's health care professionals, and support programs. We are honored to present this At-a-Glance Report, where we will highlight some of our greatest achievements of fiscal year 2019 (FY19).

This At-a-Glance is a preview of the FY19 annual report. It begins by describing the sociodemographic landscape of our patients. It is amazing how many children we have been able to reach across Texas and around the world. We will highlight one-of-a-kind treatments and clinical trials, like the use of stem cell therapy to treat aggressive pediatric cancers and innovative multidisciplinary research, such as energy balance studies investigating the scientific link between physical activity, nutrition, and cancer.

During the current global COVID-19 endemic, our faculty, staff and the patients we serve have adjusted to our new environment. We have learned to work differently, providing compassionate virtual care options to patients, videoconferencing for divisional meetings, and employing social distancing precautions while on campus to keep our patients, employees and community safe. Our extraordinary teamwork has continued to demonstrate our core values through compassionate acts of kindness, such as the inspiring chalk art for frontline workers displayed on our building entrance sidewalk. We are truly #OneMDAnderson. Together we are taking a stepwise, informed approach to safely recover our operations.

Lastly, and most importantly, none of our accomplishments would be possible without the continued support of our donors and Board of Visitors and the commitment from our faculty and staff to deliver service excellence. Thank you for your dedication. Please enjoy this preview, and we look forward to working together with you to become the premier pediatric cancer center in the world.

Sincerely,



**Richard Gorlick, M.D.**  
Division Head

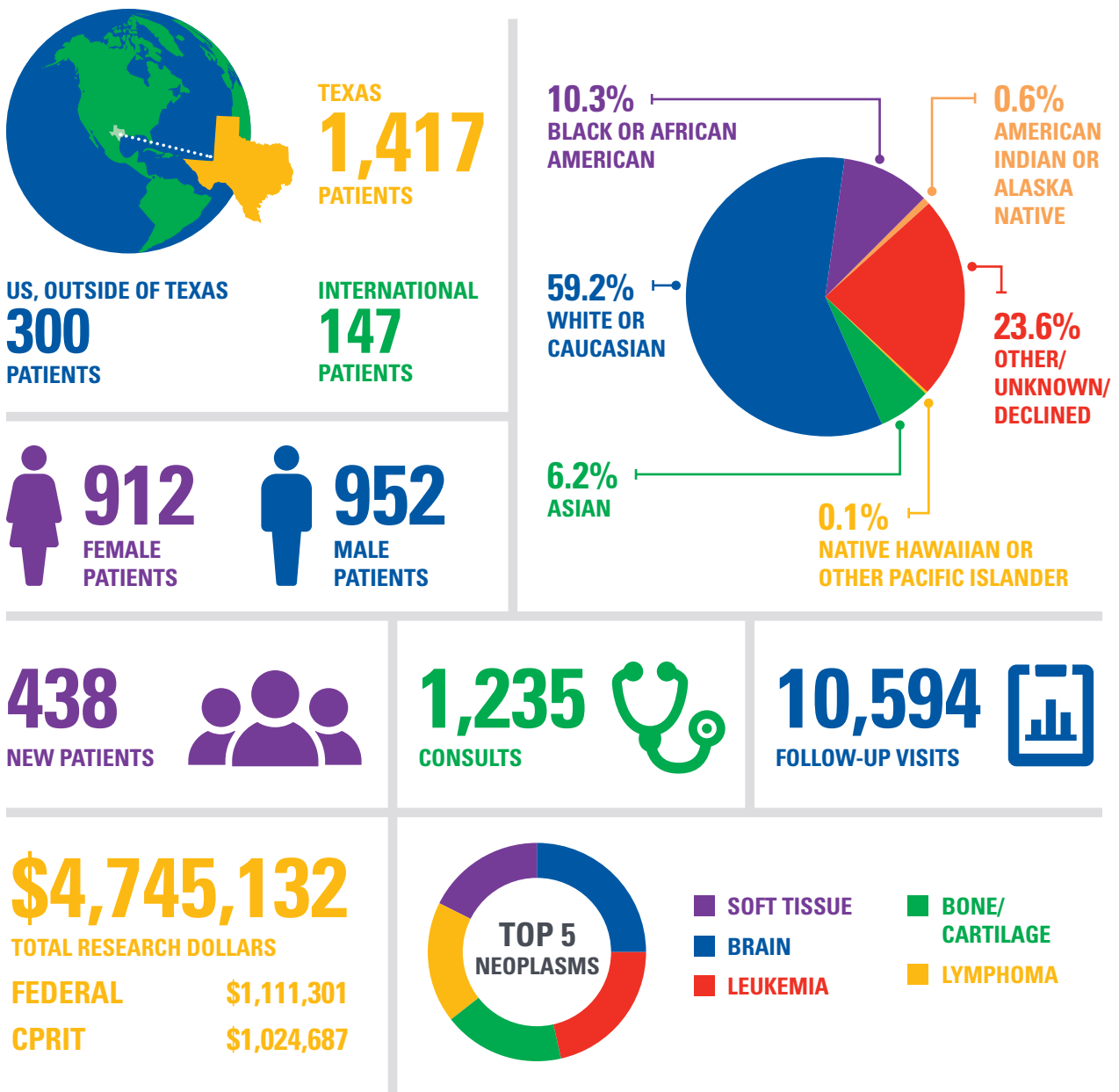


**Lisa Hafemeister, M.H.A., F.A.C.H.E.**  
Executive Director & Division Administrator

## By the numbers

Clinical activity and gross patient revenue has significantly improved by more than 25 percent in the last two years due to growth in many of the clinical areas. Creation of the Adolescent and Young Adult program, growth in Stem Cell Therapy, Neurofibromatosis and Supportive Care services, as well as an increase of infusion services in the outpatient Pediatric Ambulatory Treatment Center account for the most growth.

The Pediatric inpatient service has developed extensively and has more than doubled in size over the course of the last three years, mostly attributed to an enhanced stem cell therapy program and supportive care services.



## In the news

Clinical care, research, camps and patient programs at the Children's Cancer Hospital were in the spotlight in FY19. Whether highlighted in MD Anderson's publications, or in stories produced by local or national media outlets, people heard a lot about us.

### PUBLICATION NEWS STORIES



# 19

**HEADLINES IN MD ANDERSON PUBLICATIONS\***

\* Four covers of *Promise Magazine* — we were on the cover every quarter



# 15

**PRINT**  
(newspaper/  
magazine/trade)

### MEDIA STORIES

# 120

**BROADCAST\***  
(television and radio)



\* CNN aired Prom Party Palooza on 89 affiliates, reaching approximately **1.88 million viewers**

# 136

**ONLINE STORIES\***



\* Several stories appeared in multiple online outlets

# Balance for life

Energy balance research is the study of activities that generate energy (i.e. eating calories) or utilize energy (i.e. physical activity). Led by **Keri Schadler, Ph.D.**, assistant professor, and **Karen Moody, M.D.**, associate professor, the Energy Balance program utilizes novel methods to examine the link between energy balance and cancer and answer important questions at all stages, such as:

- How does diet, nutrition, physical activity and exercise impact cancer risk, treatment effectiveness, and survivorship in pediatric patients?
- Does exercise make more chemotherapy get into the tumor?
- Does early nutritional support for bone marrow transplant patients reduce the chance of being admitted to the ICU?
- Can an eHealth exercise-based lifestyle intervention be used to prevent functional decline during and after cancer treatment?

“Our philosophy is that exercise and nutrition must be studied scientifically, using the same principles that are used to study pharmacologic interventions,” Schadler says. Thus, the foundation of the energy balance program is built upon work conducted in three basic science laboratories that use pre-clinical modeling to understand the molecular mechanisms by which energy balance impacts cancer biology, treatment efficacy and associated sequelae, and long-term survivorship.

### Successes to date

Together, the pre-clinical and clinical research being done by the energy balance faculty led to nine peer-reviewed published research studies and almost \$1.5 million in external grant funding in 2019. Concurrent with research to ensure that scientifically sound interventions are developed, the energy balance team has developed several patient-centered programs to improve quality of life for our patients through exercise (i.e. the ProFit program, PE class, bedside yoga, and TeamMe) and nutrition (i.e. cooking classes, At the Table eCookbook). Exercise research and programming

is expected to be further supported by the development of a pediatrics patient gym within our inpatient unit.

**Maria Chang Swartz, Ph.D., M.P.H., R.D., L.D.**, a behavioral scientist, has joined our faculty to provide expertise in the psychosocial aspect of behavior change needed to successfully incorporate energy balance interventions as an adjuvant to cancer care.

### Research

Consistent with our goal of building an evidence-based energy balance program, our robust research environment includes four actively enrolling clinical trials and three basic science laboratories.

### Future directions

Our energy balance team will be conducting novel research combining exercise and nutrition interventions, a national study of exercise for bone cancer patients, and ultimately, incorporating evidence-based exercise and nutrition into standard of care.



## Our stem cell transplantation and cellular therapy program

The Stem Cell Transplantation and Cellular Therapy (SCT-CT) Program has grown exponentially in the past two years to provide high-caliber cellular therapies to eliminate cancer and offer personalized patient care.

**Kris Mahadeo, M.D., M.P.H.**, associate professor of Pediatrics and SCT-CT section chief, along with **Joan O'Hanlon Curry, M.S., R.N., A.P.R.N., C.P.N.P., C.P.O.N.**, administrative director of Pediatric Clinical Services, lead a dream team of physicians, advanced practice providers, clinical nurses, transplantation coordinators, pharmacists and other ancillary staff who provide comprehensive care for children and young adults who require SCT and cell therapy up to age 25.

In collaboration with colleagues throughout the institution, we offer the capabilities of one of the largest programs and most experienced multidisciplinary program for pediatric hematologic malignancies and stem cell transplantation in the country. This includes trials that are unique to our institution. Our stem cell clinical trials offer access to novel preparative regimens that aim to improve survival, decrease morbidity and also advance the field of regenerative medicine. Patient and treatment plan considerations are incorporated in our aim to cure each child of their condition and preserve or improve their long-term quality of life.

## Chimeric antigen receptor (CAR T) and immune effector cell therapies

A substantial portfolio of CAR T and Immune Effector Cell (IEC) therapies exists within our program and are embedded in a Foundation for the Accreditation of Cellular Therapy (FACT) accredited IEC center. It is an integral component of the MD Anderson Cancer Center CARTOX Program. We believe these trials will have superior outcomes and significantly less toxicities. Moreover, our program offers an array of cytotoxic lymphocytes (CTLs) engineered to fight against infections, which may be commonly seen among immunocompromised patients. Further, stem cell transplant clinical trials and post stem cell maintenance studies are also offered.

For a comprehensive list of our pediatric clinical trials, visit [www.mdanderson.org/CCHclinicaltrials](http://www.mdanderson.org/CCHclinicaltrials).

As leaders in this area, we published the first comprehensive management guidelines for pediatric patients receiving this therapy. Key aspects of these guidelines have been adopted by the American Society for Transplantation and Cellular Therapy (ASTCT).



Thanks to the stem cell transplantation performed by **Sajad Jawad Khazal, M.B. Ch.B.**, Kaylyn White can continue to experience fun and engaging activities. Shown above, she is polishing her culinary skills at our Celebrity Chef Cooking Demo during Childhood Cancer Awareness Month.



**All donations matter.**  
The cumulative total amount  
of donations less than \$50,000  
received in FY19 was an amazing  
**\$1,317,838.**





## From the bottom of our hearts, thank you.

So much of what sets the Children’s Cancer Hospital apart is made possible because of generous donors. A community of individuals, civic groups, philanthropists, and corporations have committed to helping our cause. Donor support allows us to investigate ideas that are becoming breakthroughs and provide psychosocial activities for our patients and families to deal with one of the most challenging diagnoses they will face in their lifetimes.

We would like to recognize the following individuals who made contributions in the past fiscal year that were \$50,000 and above and hope to earn your continued support.

<div style="background-color: #FFA500; padding: 5px; display: inline-block; margin-bottom: 10px;"><b>More than \$500,000</b></div> <p><b>7-Eleven/Stripes</b></p> <p><b>Energy Transfer LP</b></p> <p><b>Estate of Athena Loutsch</b></p> <p><b>James B. &amp; Lois R. Archer Charitable Foundation</b></p> <p><b>The Living Legends Foundation, Inc.</b></p>	<p><b>\$101,000 – \$500,000</b></p> <p><b>Addi’s Faith Foundation</b></p> <p><b>Ed Rachal Foundation</b></p> <p><b>Harry T. Mangurian, Jr. Foundation, Inc.</b></p> <p><b>Houston Tri Delta Philanthropies, Inc.</b></p> <p><b>Mr. Kelcy L. Warren</b></p> <p><b>Swim Across America</b></p> <p><b>The Energy Transfer/Sunoco Foundation</b></p> <p><b>The M. S. Doss Foundation, Inc.</b></p> <hr style="border-top: 1px dotted #000;"/> <p><b>\$50,000 – \$100,000</b></p> <p><b>Bob Tallman’s Charities, Inc.</b></p> <p><b>Latattore, LLC</b></p> <p><b>LyondellBasell Industries</b></p> <p><b>Texas 4000 For Cancer</b></p> <p><b>The Harry and Estelle Soicher Foundation</b></p> <p><b>United Continental Holdings, Inc.</b></p>
---	--

## BOV advisory group

The Children’s Cancer Hospital Advisory Group is a vital component of the MD Anderson Cancer Center Board of Visitors (BOV). This leadership body is committed to helping us achieve our mission of eliminating cancer in children. Board programs emphasize private fund development, public relations, and outreach on behalf of the hospital. We are grateful for their dedication.

**Mrs. Linda Mays McCaul**, Chair  
**Mr. & Mrs. James Archer**  
**Mr. Michael G. Bartolotta**  
**Ms. Michelle M. Bengue**  
**Mrs. Karen Comiskey**  
**Mrs. Anne P. Connally**  
**Mrs. Nadine Craddick**  
**Mrs. Donna Culliver**

**Mr. Timothy Culliver**  
**Mr. Jay Eisenberg**  
**Mrs. Elizabeth G. Epley**  
**Mr. Brendan J. Fikes**  
**Mrs. Patsy Fourticq**  
**Ms. Barbara Hurwitz**  
**The Honorable Brenda L. Johnson**  
**Ms. Luci B. Johnson**

**Mr. Andrew D. McCullough, Jr.**  
**Mrs. Pamela K. Onstead**  
**Mrs. Joan Weingarten Schnitzer**  
**Mr. Sam L. Susser**  
**Mr. Mac Tichenor**  
**Mrs. Sheridan Williams**  
**Mrs. Kathryn Hall Wilson**

## Division of Pediatrics — Administrative leadership and faculty

### ADMINISTRATIVE LEADERSHIP

Division Head and Department Chair  
**Richard Gorlick, M.D.**, Professor

Deputy Division Head, *Ad Interim*  
**Cynthia E. Herzog, M.D.**, Professor

Medical Director for Pediatric  
 Children’s Cancer Hospital and  
 Center Medical Director for  
 the Robin Bush Child and  
 Adolescent Center

**Douglas Harrison, M.D.**,  
 Associate Professor

Director, Pediatric Research  
 Laboratory Program  
**Shulin Li, Ph.D.**, Professor

Director, Pediatric Clinical and  
 Translational Research Program  
**Jonathan Gill, M.D.**,  
 Associate Professor

Executive Director and Division  
 Administrator  
**Lisa Hafemeister, M.H.A.**,  
**F.A.C.H.E.**

Administrative Director,  
 Pediatric Clinical Services  
**Joan O’Hanlon Curry, M.S., R.N.**,  
**A.P.R.N., C.P.N.P., C.P.O.N.**

Associate Director, Pediatrics  
 Finance,  
 Pediatrics Administration  
**Michelle Gatliff, B.S.**

Director, Pediatric Operations,  
 Pediatrics-Support Programs  
**Kevin Long, M.B.A., F.A.C.H.E.**

Department Administrator,  
 Pediatrics-Research  
**Tajuanna Thibodeaux, M.B.A.**

Associate Department Administrator,  
 Pediatrics-Patient Care

**Luis “Tony” Choy-Morga, M.B.A.**

Project Director, Office of Division,  
 Pediatrics Administration  
**Altrivice Revis, M.B.A.**

### FACULTY

*\*These faculty have secondary  
 appointments in Pediatrics.*

Adolescent and Young Adult (AYA)  
 Oncology/Survivorship

**Michael Roth, M.D.**,  
 Associate Professor

**J. Andrew Livingston, M.D., M.S.**,  
 Assistant Professor\*

Brain & Spinal Tumors

**Soumen Khatua, M.D.**,  
 Associate Professor

**Zsila Sadighi, M.D.**,  
 Associate Professor

**Wafik Zaky, M.B.B.CH.**,  
 Associate Professor

**John Slopis, M.D.**, Professor\*

Critical Care

**Ali Haider Ahmad, D.O.**,  
 Assistant Professor

**Jose Antonio Cortes, M.D.**,  
 Assistant Professor

**Linette Jeanna Ewing, D.O.**,  
 Assistant Professor

**Rodrigo Mejia, M.D.**,  
 Professor

**Shehla Razvi, M.D.**,  
 Assistant Professor

Endocrine

**Steven Waguespack, M.D.**,  
 Professor\*

**Anita Ying, M.D., M.B.A.**,  
 Associate Professor\*

Infectious Diseases

**Natalie Daley Garnes, M.D.,  
 M.P.H.**, Assistant Professor\*

Integrative Medicine/  
 Supportive Care

**Karen Moody, M.D., M.S.**,  
 Associate Professor

Leukemia/Lymphoma

**Michael E. Rytting, M.D.**,  
 Professor

**Branko Cuglievan, M.D.**,  
 Assistant Professor

**Cesar Augusto Nunez, M.D.**,  
 Associate Professor

**Michael Roth, M.D.**,  
 Associate Professor

**Robert Wells, M.D.**,  
 Adjunct Professor

Non-Neural Solid Tumors (NNST)

**Najat Daw Bitar, M.D.**, Professor

**Jonathan Benjamin Gill, M.D.**,  
 Associate Professor

**Richard Gorlick, M.D.**,  
 Professor

**Douglas J. Harrison, M.D.**,  
 Associate Professor

**Fiorela Natali Hernandez  
 Tejada, M.D.**,  
 Assistant Professor

## Acknowledgments

### Division of Pediatrics — Administrative leadership and faculty

**Cynthia E. Herzog, M.D.,**  
Professor

**Pooja Hingorani, M.B.B.S.,**  
Associate Professor

Psychology

**Martha Askins, Ph.D.,**  
Associate Professor

**Rhonda Robert, Ph.D.,** Professor

**Peter Stavinoha, Ph.D.,** Professor

Stem Cell Transplantation and  
Cellular Therapy/Immunology

**Sajad Jawad Khazal, M.B. Ch.B.,**  
Assistant Professor

**Kris Michael Mahadeo, M.D.,  
M.P.H.,** Associate Professor

**Demetrios Petropoulos, M.D.,**  
Professor

**Priti Tewari, M.D.,**  
Associate Professor

#### UTHEALTH SCIENCE CENTER ADJUNCT FACULTY

Cardiology

**Gurur Biliciler-Denktaş, M.D.,  
F.A.C.C., F.A.S.E.,**  
*Ad Interim* Co-Chief and  
Associate Professor

Gastroenterology  
**J. M. Rhoads, M.D.,**  
Director and Professor

Nephrology  
**Rita D. Swinford, M.D.,**  
Director and Associate Professor

Pediatric Neurosurgery  
**David I. Sandberg, M.D.,**  
Chief and Professor

Pediatric Surgery  
**Kevin P. Lally, M.D., M.S.,  
F.A.C.S.,** Chairman and Professor

Pulmonary Medicine  
**James M. Stark, M.D., Ph.D.,**  
Chief and Professor

Basic Research  
**Joya Chandra, Ph.D.,**  
Associate Professor

**Donghang Cheng, Ph.D.,**  
Assistant Professor

**Vidya Gopalakrishnan, Ph.D.,**  
Associate Professor

**Nancy Gordon, M.D.,**  
Assistant Professor

**Jiemiao Hu, Ph.D.,**  
Instructor

**Sankaranarayanan Kannan,  
D. Phil.,** Instructor

**Eugenie S. Kleinerman, M.D.,**  
Professor

**Pappanaicken R. Kumar, Ph.D.,**  
Instructor

**Shulin Li, Ph.D.,**  
Professor

**Shinji Maegawa, Ph.D.,**  
Instructor

**Amer M. Najjar, Ph.D.,**  
Assistant Professor

**Keri L. Schadler, Ph.D.,**  
Assistant Professor

**Shavali Shaik, Ph.D.,**  
Instructor

**Harjeet Singh, Ph.D.,**  
Instructor

**Rong-Hua Tao, Ph.D.,**  
Instructor

**Hiroki Torikai, M.D.,**  
Instructor

**Xin Zhou, Ph.D.,**  
Assistant Professor

Health Outcomes

**Maria Chang Swartz,  
Ph.D., R.D., L.D.,**  
Assistant Professor

### Project team

The At-a-Glance Project Team is pleased to highlight recent accomplishments that provide hope and comprehensive treatment options to our patients and their families. We appreciate colleagues who contributed content and ideas to make the publication a success.

**Altrivice Revis, M.B.A.**  
Project Director

**Cecilia Aguerre, Ph.D.**  
Program Manager

**Maxsane Mitchell, B.S.**  
Program Manager

**Katrina Burton, B.S.**  
Program Manager

**Ronda Wendler, M.A.**  
Program Manager

**Jasmine Raziuddin, B.F.A.**  
Senior Communications Designer



THE UNIVERSITY OF TEXAS  
**MD Anderson**  
~~Cancer~~ Center  
 Children's Cancer Hospital®