

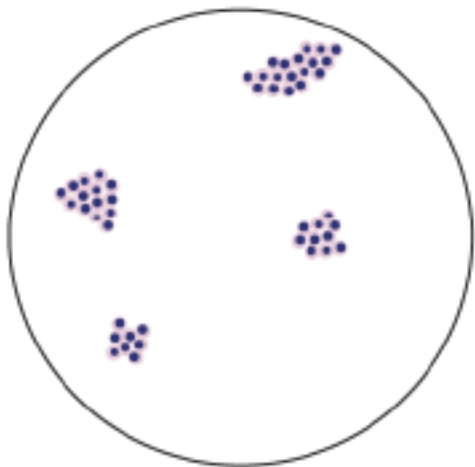
# Graphical Illustrations of Percentage Cancer Cellularity



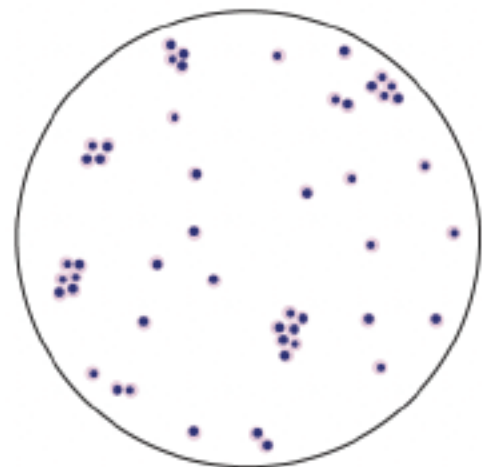
1% Grouped



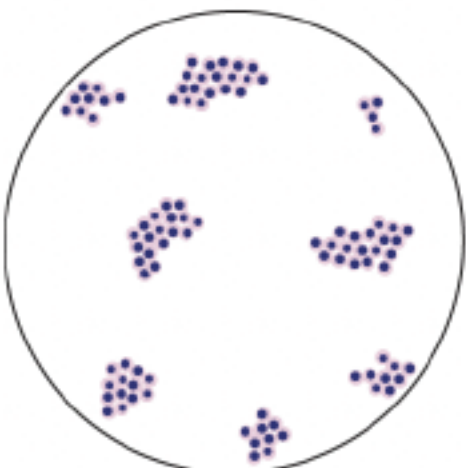
1% Scattered



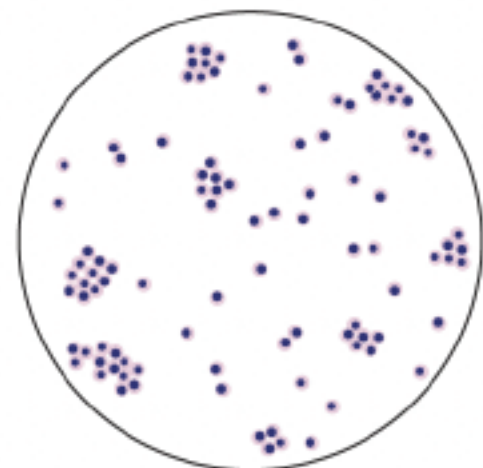
5% Grouped



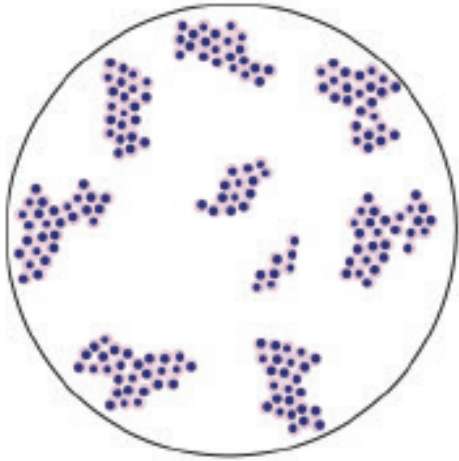
5% Scattered



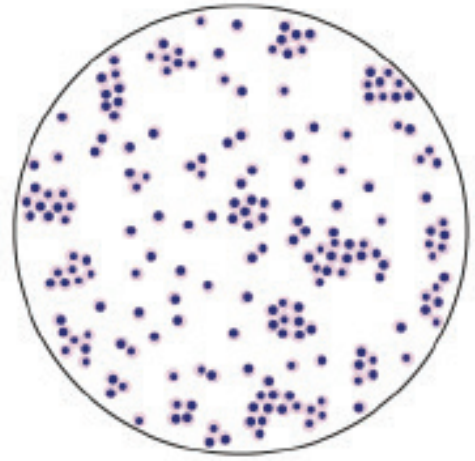
10% Grouped



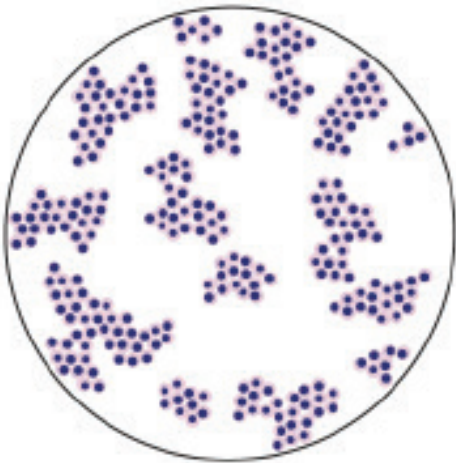
10% Scattered



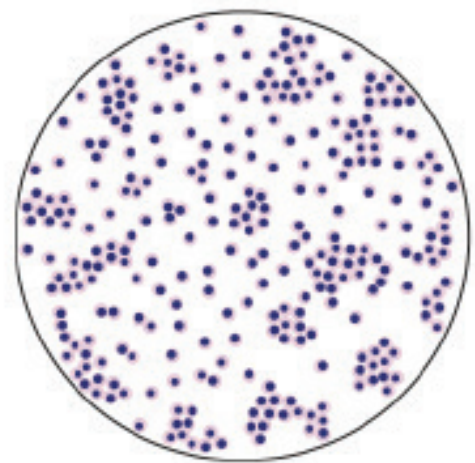
20% Grouped



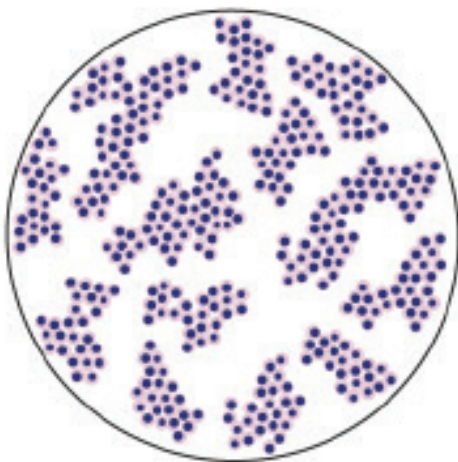
20% Scattered



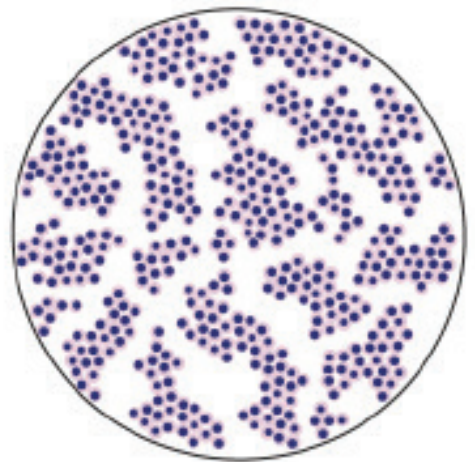
30% Grouped



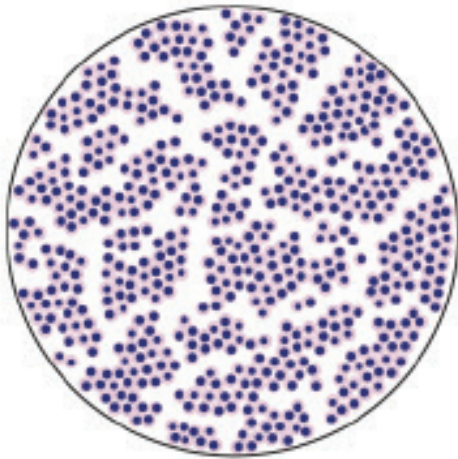
30% Scattered



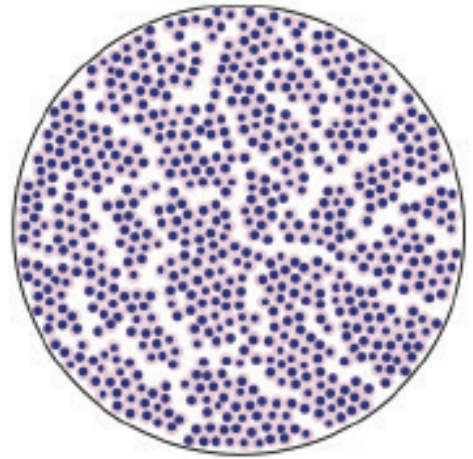
40%



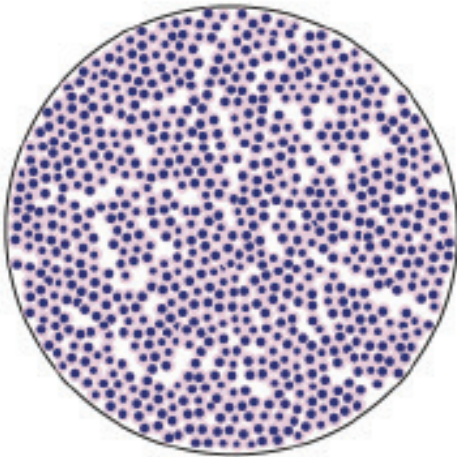
50%



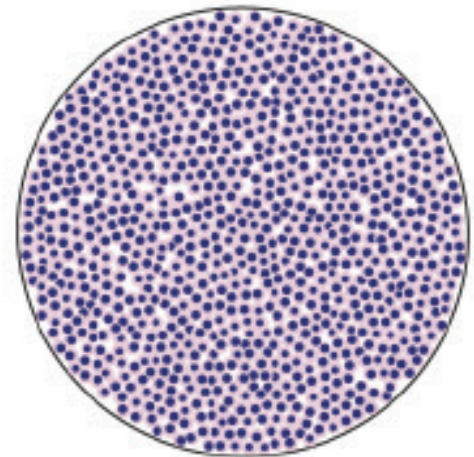
60%



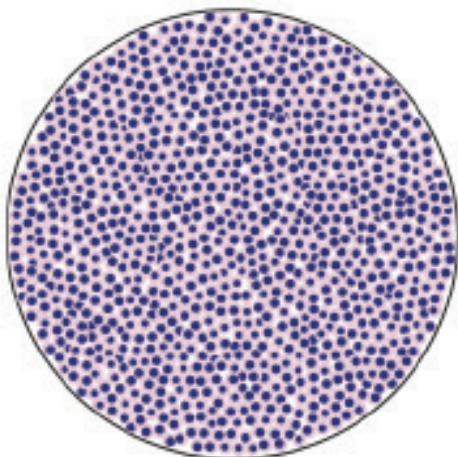
70%



80%



90%



95%

**DETAILS OF THIS MODEL**

Area of circle = 2,827.8 mm<sup>2</sup>

Area of 1 cell = 2,827.8 mm<sup>2</sup>

1 cell = 0.1% of area = 0.1% cellularity

10 cells = 1% cellularity

1000 cells = 100% cellularity