

Fellows In Focus

M.D. Anderson Education Program in Cancer Prevention

Winter 2005

In this Issue

UT M.D. Anderson Postdoctoral Association

Meet Some of Our Trainees

Robert M. Chamberlain
Distinguished Mentor
Award

Congratulations!

New Appointments

Career Development

A Fellow Soldier

News You Can Use

Fellowship Announcements

Conferences and Important Dates

UT M.D. Anderson Postdoctoral Association

The University of Texas M.D. Anderson Postdoctoral Association (PDA) aspires to review and recommend policies and initiatives to ensure quality of research experience and quality of work/life issues.

Our mission is to:

- First, to develop a sense of community by fostering professional and social interactions among postdoctoral fellows throughout the institution.
- Second, to provide a forum to disseminate accurate information and address issues relevant to postdoctoral fellows.
- Third, to promote a productive dialogue among postdoctoral fellows, the administration and the faculty.

Any Postdoctoral fellows interested in participating on the PDA Steering Committee should contact Tracy Costello at (713) 745-0064 or tthiel@mdanderson.org



Postdoctoral Association, Steering Committee

Left to right: Martha Skender, Erica Strobl, Ph.D., German Santamaria, M.D., Loleta Harris, Ph.D., *Richard Swartz, Ph.D. (*Past Chair*), Mathew Fitzpatrick, Ph.D., Robert Chamberlain, Ph.D., *Tracy Costello, Ph.D. (*Chair*), Tara Polek, Ph.D., Daniel Rosen, M.D., Guadalupe Reyes, Ph.D., and Anil Shetty, M.B.B.S.

not pictured: Erika Abel, Ph.D., Scott Byrne, Ph.D., Collene Jeter, Ph.D., *Daniel Hughes, Ph.D., Denae King, Ph.D., *Michael Schuerer Ph.D, Brian Thomas, Ph.D., Guliang (Graham) Wang, Ph.D., and Alicia Zicker, Ph.D. (*R25 Fellow)

MEET Some Of Our TRAINEES

The Division of Cancer Prevention is proud to introduce the newest awardees of the Cancer Prevention Education Program at M.D. Anderson. This program prepares future scientists to assume roles as research investigators in the field of cancer prevention. Potential applicants select a full-time M.D. Anderson faculty member involved in cancer prevention research who will supervise the trainees throughout the fellowship. Applicants also work closely with a co-mentor from a specialty or discipline different from that of the primary mentor. These fellowships are funded by the National Cancer Institute and require all applicants to be United States citizens or lawfully admitted permanent residents (applicants with Visas are not eligible).



BEATRIX FOLDI, M.P.H. obtained her degree in Epidemiology in May 2005 at the University of South Florida College of Public Health, Tampa, Florida. She recently registered at the UTHSCH School of Public Health in Houston, Texas expecting to earn her Ph.D. in Epidemiology by 2010.

Beatrix's proposal is entitled "*Relationship Between Hyperglycemia and Outcomes in Patients with Potentially Resectable Pancreatic Cancer.*" Dr. Mary Weiser of the Department of General Internal Medicine is her faculty mentor.

LAURENS HOLMES, M.P.H. expects to earn his Ph.D. in Epidemiology in 2006 from The University of Texas at Houston, School of Public Health. Prior to coming to the United States, he has been involved in basic medical sciences, academic clinical medicine and teaching medical students at various medical schools in the Caribbean (Antigua, St. Lucia and St. Kitts). Laurens' proposal is entitled, "*A Descriptive Analysis of Chemotherapy-induced Hypersensitivity Reaction in Cancer Patients at MD Anderson Cancer Center, Houston, Texas During 2005.*" Dr. Jeong Oh of the department of General Internal Medicine is his faculty mentor.



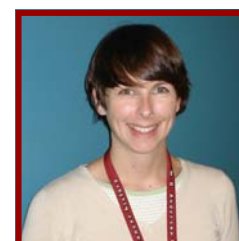
For his future research, Laurens postulated that prostate specific antigen (PSA) G/A alleles and Androgen receptor (hAR) CAG repeats polymorphism may modulate negative biopsy in men with elevated PSA (> 4.0 ng/ml). His hypothesis had been submitted to Dr. Richard Babain, Chair of Urology at MDACC and awaits funding for testing. Laurens is contemplating submitting a K - proposal for this research project.



DANIEL CARLOS HUGHES, Ph.D. earned his degree in 2004 from The University of Houston. He is training in the Department of Behavioral Science, mentored by Karen Basen Engquist, Ph.D.

Daniel's proposal is entitled "*Physical Activity, Perceived Stress and Cortisol Levels in Endometrial Cancer Survivors.*"

ANNE PORTER, B.S. obtained her degree in Biology and expects to earn a M.P.H. in Epidemiology, May 2007 from The University of Texas at Houston, School of Public Health. She is training in the Department of General Internal Medicine. Anne's proposal is entitled "*The Effect of Comorbid Conditions on Surgical Outcomes Among Cancer Patients.*" Dr. Sun Sahai is her faculty mentor.



Congratulations !

Robert M. Chamberlain Distinguished Mentor Award

Robert M. Chamberlain, PhD, Professor and Deputy Chair of the Department of Epidemiology, has been recognized by the Postdoctoral Association (PDA) as being a dedicated and distinguished mentor of postdoctoral fellows at MD Anderson Cancer Center. Dr. Chamberlain has been an outstanding mentor not only to postdoctoral fellows, but also other faculty members. He has served as both a member and a Chairman of the Postdoctoral Advisory committee for several years. He has unwaveringly supported the Postdoctoral Association by being an advisor and attending PDA sponsored events. He has strived to extend his guidance and wisdom through his presentations on mentoring in every Fast Track Orientation, which is an event supportive of new and entering postdoctoral fellows. We honor Dr. Chamberlain by naming this award after him. By placing his name on this award we honor Dr. Chamberlain and his excellence in mentoring.



June 8, 2005 Award Presentation

Left to right: Richard Swartz, Ph.D. and Robert Chamberlain, Ph.D.

enrich not only the postdoctoral experience at MD Anderson, but also the quality of research and patient care at MDACC. This will be an annual event sponsored by the MD Anderson Cancer Center Postdoctoral Association. When a recipient is chosen, he or she will be acknowledged as the Robert M. Chamberlain Distinguished Mentor of the Year.

The Robert M. Chamberlain Distinguished Mentor Award has been created to recognize the faculty for being exceptional mentors to postdoctoral fellows at MD Anderson Cancer Center. In creating this award, the PDA intends to encourage dialogue between faculty and fellows that will

Award Description

The award includes a monetary prize of \$1000, having one's name listed on a plaque with previous recipients, a physical award to display and a reception given in the recipient's honor at the Robert M. Chamberlain Distinguished Mentor Award Ceremony. This program will be a PDA-sponsored public event, where the award will be officially presented to the recipient.

Eligibility

The awardee must be a faculty member of MD Anderson Cancer Center and have demonstrated excellence in all the roles of a mentor including the following:

- Teacher – He/She should act as an Instructor, Example, Learning facilitator, and Goal setter.
- Coach – He/She should act as an Observer, Critic, and Cheerleader.
- Sponsor - He/She should serve as an Advocate, Promoter, Facilitator, and Protector.
- Employer – He/She should act as a Boss, set Standards, uphold the Team attitude, and be Equitable.

Contact Information

Questions regarding this award should be addressed to: The Postdoctoral Association postdoctoralassociation@mdanderson.org



Congratulations (continued)



Having finished his two-year postdoctoral fellowship, **GUOJUN LI, M.D., Ph.D., M.Sc.** was appointed an Assistant Professor position in the Department of Head and Neck Surgery at M.D. Anderson Cancer Center to continue to pursue his cancer research activities.

Guojun completed his M.D. with a major in medicine and public health in July 1987 from Tongji Medical University, Wuhan, China and earned a MS in food and nutrition from the North Dakota State University in 1993. Subsequently, he began his Ph.D. study in the Cellular and Molecular Biology Program at the North Dakota State University from September 1995 to December 1997. To achieve his long-term research goals: 1) to combine the molecular and epidemiological approaches with nutritional strategies to identify biomarkers and to use these biomarkers to identify subgroups at high-risk for primary cancer

prevention and chemoprevention and 2) to establish himself as an independent molecular epidemiologist in translational study for cancer prevention, Guojun transferred to the University of Texas Health Science Center at Houston, School of Public Health and entered the Ph.D. program in Biological Sciences with an emphasis in molecular epidemiology.

Having obtained his PhD degree in 2002 from The University of Texas at Houston, School of Public Health with a major in Molecular Epidemiology, Guojun has been on the NCI R25 post-doctoral cancer prevention training program in the Department of Epidemiology at MD Anderson Cancer Center under the directorship of Dr. Qingyi Wei and Dr. Margaret Spitz. His postdoctoral research focused on molecular and nutritional epidemiology of lung and head and neck cancers, mainly in the areas of genetic variation in cell-cycle regulators and DNA repair genes and cancer susceptibility. Within the two-year's postdoctoral training, Guojun has published nine publications in prestigious journals of the molecular epidemiology field such as *Carcinogenesis*, *Cancer Epidemiology, Biomarkers & Prevention*, *Prevention*, *Clinical Cancer Research*, and *Cancer Research*, presented five poster presentations nationally and seven seminars in other universities and cancer institutes, and won one scientific award at the Day of Science in Cancer Prevention.

In a lung cancer study published in *Cancer Research* entitled "*p73 G4C14-to-A4T14 Polymorphism and Risk of Lung Cancer*", the results demonstrated that a haplotype variant in *p73*, a cell-cycle regulator gene, contribute to the development of lung cancer." This finding underscores the important role of cell-cycle genes in genetic susceptibility to lung cancer and provides the rationale of identifying at-risk sub-population for cancer prevention. Guojun also investigated the effects of genetic variation of other cell-cycle regulator genes such as *p53*, *p27*, *p21* and *MDM2*, on the risk of lung and head and neck cancers. His other research interests include the viral epidemiology, nuclear hormone receptors and chemoprevention, and early detection and biomarkers for clinical outcomes.

PEGGY SCHUBER, Ph.D. has accepted a faculty appointment as Assistant Professor of Community Health Nursing with The University of Nevada Las Vegas (UNLV). The Fall semester at UNLV begins on August 29, and she will be teaching two undergraduate classes (1) Tertiary Prevention (i.e., living with chronic illness) and (2) Population-Focused Care (i.e., co-faculty for a

Forwarding address:

Dr. Peggy Schuber-
UNLV School of Nursing
4505 Maryland Parkway, Box 453018
Las Vegas, NV 89154 - 3018
Main Phone: (702) 895-5440
Email: peggy.schuber@unlv.edu

community health nursing course). Peggy has begun establishing a link for research with the Nevada Cancer Institute.



Congratulations (continued)

RICHARD SWARTZ, Ph.D., submitted a K07 entitled “Methods for a Longitudinal CAT” and in receiving the award joined the M.D. Anderson faculty roster as instructor with a primary appointment in the Department of Biostatistics and Applied Mathematics, and a joint appointment in the Department of Behavioral Science.

Specifically Richard is interested in using computerized adaptive testing (CAT) to improve longitudinal measurement of patient-reported health outcomes important in cancer prevention and cancer control, such as depressive symptoms.



HONGYAN “NATHAN” XU, Ph.D., M.S., B.S., was recently appointed an Assistant Professor position in the Department of Biostatistics at Medical College of Georgia to continue his research activities on cancer and other complex diseases in these areas.

Nathan obtained his B.S. in Biophysics at Fudan University, Shanghai, China, where he received strict training in both biology and mathematics. Then he moved on to genetic research for his M.S. in genetics.

During this period, he participated in many joint research projects between the Institute of Genetics, Fudan University and Chinese National Human Genome Center at Shanghai, where he received training in human genome research from data generation to data analysis. For example, his master's thesis project is using genome scan approach to identify susceptibility genes for type 2 diabetes, in which he participated in genotyping and linkage analysis.

Upon graduation, Nathan was admitted to the Human and Molecular Genetics program at the University of Texas-Graduate School of Biomedical Sciences at Houston as a Ph.D. student and worked as a research assistant in the Human Genetics Center, UT-Health Science Center at Houston, where he received systematic trainings in human population and statistical genetics.

To achieve his career goal of becoming an independent researcher in genetic epidemiology with expertise in statistical genetics of complex diseases, Dr. Xu did his postdoctoral training at the Computational Genetic Epidemiology Section, Department of Epidemiology, the University of Texas M. D. Anderson Cancer Center. The major focus of his postdoctoral training is statistical genetics and genetic epidemiology under the mentorship of Dr. Sanjay Shete and Dr. Margaret Spitz.

Dr Xu's postdoctoral training was supported by donor-sponsored Dauphin Postdoctoral Fellowship in Cancer Prevention. Within his two-year's postdoctoral training, Nathan has six publications in prestigious journals of the genetic epidemiology field such as Genetics, Human Genetics, Human Heredity, and BMC Genetics, five poster presentations nationally and six seminars at M. D. Anderson and other institutions. He also won one scientific award at the Genetic Analysis Workshop 14 held by the International Genetic Epidemiology Society.

In a lung cancer study published in Human Genetics entitled “Complex segregation analysis reveals a multi-gene model for lung cancer,” Nathan showed that both environmental and genetic factors contribute to the disease transmission pattern of lung cancer and he is working to further reveal the genetic models of lung cancer, which is important for identifying the susceptibility genes underlying lung cancer and the high-risk group of population for cancer prevention. Nathan is also investigating the effects of population structure/admixture on association studies and haplotype analysis, a popular approach for revealing the genetic basis of complex diseases such as cancer.

New Appointees!

**Michelle Fingeret, Ph.D.**

R25 Postdoctoral Trainee, Behavioral Science

Mentors: Ellen Gritz, Ph.D. and Ann Gillenwater, M.D.

Research Title: *A Prospective Examination of Smoking Status and Body Image in Surgical Patients with Cancer of the Oral Cavity*

Carlos A. Mazas, Ph.D.

R25 Postdoctoral Trainee, Health Disparities

Mentors: David Wetter, Ph.D. and Maria Fernandez-Esquire, Ph.D.

Research Title: *Ecological Momentary Assessment of Smoking Cessation in Spanish Speaking Smokers*

**Jennifer Minnix, Ph.D.**

R25 Postdoctoral Trainee, Behavioral Science

Mentors: Paul Cinciripini, Ph.D. and Yisheng Li, Ph.D.

Research Title: *Affective Modulation of Negative Affect in Response to Nicotine Administration*

Michael Swartz, Ph.D.

R25 Postdoctoral Trainee, Epidemiology

Mentors: Sanjay Shete Ph.D., Margaret Spitz, M.D. and Michelle Forman, Ph.D.

Research Title: *Developing Hierarchical Bayesian Models for Lung Cancer Risk Using Dietary, Environmental and Genetic Factors*

**Hushan Yang, Ph.D.**

Postdoctoral Trainee, Rubenstein Fellow, Epidemiology & Biostatistics

Mentors: Xifeng Wu, M.D. and Margaret Spitz, M.D.

Research Title: *A Pathway-Based Approach for Predictors of Radiotherapy Response in Patients with Non-Small Cell Lung Cancer*

New Appointees (continued)



Jill Amaon, M.P.H.

Predoctoral Trainee, Epidemiology

Mentors: Sara Strom, Ph.D. and Sergio Giralt, M.D.

Research Title: *Risk Factors of Multiple Myeloma: A Case-control study*

Nisha Nayak, MA

Predoctoral Trainee, Behavioral Science

Mentors: Paul Cinciripini, Ph.D. and Jan Blalock, Ph.D.

Research Title: *Modeling Individual Change in Depressive Symptoms During Smoking Cessation as a Function of Post-traumatic Stress*



Communication From A "Fellow" Soldier

Nancy Tang, M.S., R25 Predoctoral Fellow (On Military Leave)

Update

"I am back at Navy Lodge, where I will rest ... for at least 2 weeks. ... And really, thank you for all the phone calls from all over the world. ... I do like the horse, "Echo."



Nancy Tang and Echo

Nancy Tang's Naval Reserve Unit was called to duty and assigned to Kuwait in December 2004. Upon returning to the United States, in November, she encountered a serious horseback riding accident, however Nancy has fully recovered and has returned to her predoctoral appointment beginning January 2006, mentored by Xifeng Wu, M.D., Ph.D. and Walter Hittelman, Ph.D.

News You Can Use

Library and Learning Resources Centers

The information resources available to the Cancer Center trainees are both abundant and accessible. The library collection includes English-language and foreign-language cancer literature. The Library's journal collection includes but is not limited to the fields of oncology, pathology, surgery, general medicine and radiology. [Classes](#) free of charge are also available to the M. D. Anderson community of faculty, staff, students and official visitors. Library materials are accessible through the LIO (Library Information Online) catalog. Dial-up access to the online catalog is available via desktop terminals at home or office.

Those located within the Texas Medical Center complex include:

[Houston Academy of Medicine](#)

Texas Medical Center Library (HAM-TMC)

(713) 795-4200

[The University of Texas Dental Branch Library \(DB\)](#)

(713) 500-4094

[The University of Texas Psychiatry Library](#)

(713) 741-6043

[The University of Texas](#)

[School of Public Health Library \(SPH\)](#)

(713) 500-9121

The University of Texas

Nursing School Learning Resource Center
(NS-LRC)

(713) 500-2084

[The University of Texas](#)

[Medical School Learning Resource Center \(MS-LRC\)](#)

(713) 500-5145

[The University of Texas](#)

[M. D. Anderson Research Medical Library \(MDA\)](#)

(713) 792-2282

Career Development Award (e.g. K07) Working Group

A Career Development Award Work Group is in progress with Dr. Maureen Goode to assist postdocs in developing applications. Space is available on first-come first-served basis. Contact Tracy Costello (tthiel@mdanderson.org) if you are interested.

Reduced Parking Fees

All Postdocs and Graduate Research Assistants are eligible for half-price parking (\$45.00). Parking is available in the Fannin-Holcombe Building. Contact Parking Office at (713) 563-8966 or go to the Pressler Garage PGA4.2002.

News You Can Use *(continued)*

Trainee Forum

We successfully completed our third Trainee Forum on November 11th. The Trainee Forum provides trainees the opportunity to meet other trainees and learn of their projects. Fellows received information on relevant topics such as career development material, NCI Career Development Pathway, reduced parking, the Odyssey Program, Trainee Ombudsperson and vacation guidelines well as posed questions to Dr. Chamberlain. This relaxed, informal event is held quarterly and lunch is provided. We look forward to seeing you at our next forum – March 2, 2006!



Fellowship Announcements

Application Deadline: February 1, 2006

Postdoctoral Fellowships in Cancer Prevention,
The University of Texas M. D. Anderson Cancer Center

Description & Objectives: The Cancer Prevention Education Program at the M.D. Anderson Cancer Center prepares scientists to assume roles as investigators in the field of cancer prevention. This is an ongoing program with postdoctoral positions funded by an NCI R25 grant. Postdoctoral fellowships can be supported for two years, with a possible extension to three years, dependent upon continued grant support.

The cross-disciplinary emphasis of the program is designed to expand the perspective of the trainees by moving from their base of strength in a particular specialty (medical oncology, epidemiology, molecular genetics, immunology, behavioral science, health promotion, etc.) to equip them with additional knowledge in the other disciplines in cancer prevention and control research. Postdoctoral fellowship applicants must have earned doctorates in one of the basic biomedical sciences, biomedical statistics, epidemiology, behavioral and social sciences, nursing, medicine, and related public health disciplines. Fellows are expected to learn the relevant theoretical bases, variables, research methods, and analyses used by other disciplines involved in cancer prevention research. This cross-disciplinary training is accomplished through specific graduate courses and by participation in ongoing peer reviewed research. Trainees are expected to present research reports at scientific meetings and publish their work in peer-reviewed journals. The objective is to immerse the trainee in the type of cross-disciplinary research environment typical in cancer prevention and control research, with the endpoint objective of launching the trainee in the scientific research role of principal investigator relatively earlier in his or her career. To achieve this objective, each fellow will be required, during the fellowship period, to prepare an application for a career development grant from the NCI, American Cancer Society, or other funding source.

Note: Short-term 3-6 month fellowships are also available for graduate students at any level. Full-time predoctoral (post-Masters) fellowships are also available, please inquire.

Applications: To obtain the information, inquire by phone, FAX or E-mail to Robert M. Chamberlain, Ph.D., Director, Cancer Prevention Education Program, M.D. Anderson Cancer Center – Unit 1365, mailing address P.O. Box 301439, Houston, Texas 77230-1439 (713) 792-7756, E-mail, rchamber@mdanderson.org or Dee Tello, Program Coordinator, (713) 745-2495, FAX (713) 745-1996, E-mail – dtello@mdanderson.org. Office location, Room 7.3552, Cancer Prevention Building, 1155 Hermann Pressler Blvd.

Application Deadline: January 15, 2005

Postdoctoral Fellowship

Integrative Oncology Program

The University of Texas M. D. Anderson Cancer Center

Description and objectives: The Integrative Medicine Program at The University of Texas M. D. Anderson Cancer Center is looking forward to providing a postdoctoral fellowship training opportunity to a qualified individual. The specific research opportunity involves careful investigation of promising natural products or nutraceuticals that are believed to offer distinct advantages in support of the prevention of cancer and to support the health and well being of patients with cancer. Relevant research will include but not necessarily be limited to: 1) pursuit of mechanisms of action; 2) development of appropriate analytical (e.g. HPLC or mass spectrometry) assays to define the product and its metabolism; 3) evaluation of *in vitro* and *in vivo* pharmacology and toxicology; as well as 4) development of appropriate formulations for possible clinical trials. A special interest of the current sponsored research program includes investigation of herb or other natural products that might be considered as either adjunct therapy or even as components of functional foods/drinks for the prevention of cancer.

Fellowship support provided by The Beverage Institute for Health & Wellness, a subsidiary of The Coca-Cola Company

Inquiries and applications to:

Lorenzo Cohen, PhD

Associate Professor

The University of Texas M.D. Anderson Cancer Center

1515 Holcombe Blvd., Unit 145

Houston, Texas 77030

lcohen@mdanderson.org

Upcoming Conferences

ASPO 30th Annual Meeting

Bethesda, MD

February *26–28, 2006

Abstract Deadline: October 27, 2005

**Trainee Day participants should arrive
Saturday, February 25, 2006*

Society of Behavioral Medicine

San Francisco, CA

March 22-25, 2006

Early Registration Deadline: February 22, 2006

AACR 97th Annual Meeting

Washington, DC

April 1–5, 2006

Abstract Deadline: November 14, 2005

2nd American Congress of Epidemiology

Seattle, Chicago, IL

June 21-24, 2006

Abstract Deadline: February 3, 2006

Important Dates

Brown Bag Seminars

February 1, 2005

Tracy Costello, Ph.D.
Postdoctoral Fellow,
Epidemiology
Mentor: Carol Etzel, Ph.D.
12:00 p.m. —1:00 p.m.
CPB4.3650

February 22, 2006

Hui Zaho, M.S.
Predoctoral Fellow,
Epidemiology
Mentor: Qingyi Wei, MD., Ph.D.
12:00 p.m.—1:00 p.m.
CPB4.3650

March 29, 2006

Matthew B. Schabath, Ph.D.
Postdoctoral Fellow,
Epidemiology
Mentor: Margaret Spitz, MD.
12:00 p.m.—1:00 p.m.
CPB4.3650

Postdoctoral Association Meeting

December 22, 2005 –
12:00 p.m. - 1:30 p.m.
R11.1671

January 12, 2006 –
12:00 p.m. - 1:30 p.m.
R11.2308

January 26, 2006—
12:00—1:30 p.m.
R11.1671

February 9, 2006 –
12:00 p.m. - 1:30 p.m.
R11.2308

February 23, 2006 –
12:00 p.m. - 1:30 p.m.
R11.1671

March 9, 2006 –
12:00 p.m. - 1:30 p.m.
R11.2113

March 23, 2006 –
12:00 p.m. - 1:30 p.m.
R11.1671

April 13, 2006 –
12:00 p.m. - 1:30 p.m.
R11.2308

April 27, 2006 –
12:00 p.m. - 1:30 p.m.
R11.1671

May 11, 2006 –
12:00 p.m. - 1:30 p.m.
R11.2113

May 25, 2006 –
12:00 p.m. - 1:30 p.m.
R11.1671

Fast Track

February 26, 2006

9:00 a.m.—3:00 p.m.

Cancer Prevention Grand Rounds

David H, Gustafson, Ph.D.

Professor of Industrial Engineering and Preventive Medicine and Founding Director of the Center for Health Systems Research and Analysis at the University of Wisconsin-Madison

March 3, 2006, 8:30 a.m.—9:30 a.m.

Cancer Prevention Building, 8th Floor, Rooms 7 & 8

Dr. Gustafson's interests in decision, change and information theory applied to health systems come together in the design and evaluation of systems and tools to help individuals and organizations cope with major changes. Regarding individual change his research teams have created systems to detect suicidal propensity, help teenagers adopt healthy behaviors and help families facing major health crises cope more effectively. That work focuses on the Comprehensive Health Enhancement Support System (CHESS), a computer system to help people facing serious situations such as breast and prostate cancer, asthma, AIDS/HIV, heart disease, Alzheimer's disease and sexual assault.

THE FOLLOWING IS A LIST OF ALL CURRENT R25 TRAINEES, NAMES, MENTORS, AND PROJECTS

POSTDOCTORAL FELLOWS

Jennifer Adams, Ph.D.

Department of Behavioral Science

Psychosocial Status of Male Breast Cancer Survivors

Mentors:

Leslie Schover, Ph.D., and George Perkins, M.D.

Elizabeth Carlson, Ph.D.

Department of Epidemiology

Application Of Social Capital As A Risk Factor

Construct In Cancer Disparities Research

Mentors:

Robert M. Chamberlain, Ph.D., Lorenzo, Ph.D., and Joan Engebretson, Dr. P.H., RN

Mary Coolbaugh-Murphy, Ph.D.

Department of Epidemiology

High Resolution Microsatellite Instability Analysis for Evaluating Inherited Non-polyposis Colon Cancer and Identification of Individuals at Risk

Mentors:

Marsha Frazier, Ph.D. and Michael J. Siciliano, Ph.D.

Tracy Costello, Ph.D.

Department of Epidemiology

Development and Application Of Genetic and Epidemiological Models for Chronic Lymphocytic Leukemia

Mentors:

Carol J. Etzel, Ph.D. and Sara Strom, Ph.D.

Daniel Hughes, Ph.D.

Department of Behavioral Science

Physical Activity, Perceived Stress and Cortisol Levels in Endometrial Cancer Survivors

Mentors:

Karen Basen-Engquist, Ph.D. and Anil Sood, M.D.

J. Shawn Jones, Ph.D.

Department of Epidemiology

Determination of Risk Imposed by Metabolic Gene Polymorphisms and Dietary Factors in Hereditary Non-Polyposis Colorectal Cancer

Mentors:

Marsha Frazier, Ph.D. and Christopher Amos, Ph.D.

Cho Lam, Ph.D.

Department of Behavioral Science

Remembering the Worst and Last Moments: A Peak-end Analysis of Momentary and Retrospective Assessment of Negative Affect in Smokers

Mentors:

Paul Cinciripini, Ph.D. and Juwon Song, Ph.D.

Michelle Marion, Ph.D.

Department of Behavioral Science

SpiritED: Sisters Peer-counseling in Reproductive Issues After Treatment: Examining Differences

Mentors:

Leslie Schover, Ph.D., and Amelie Ramirez, Dr. P.H

Paul Rowen, Ph.D.

Department of Behavioral Science

Education, Social Context, Stress and Smoking Cessation

Mentors:

David Wetter, Ph.D., and Andrew Waters, Ph.D.

Matthew Schabath, Ph.D.

Department of Epidemiology

Phytoestrogens, Genetic Susceptibility and Lung Cancer

Mentors:

Margaret R. Spitz, M.D and Xifeng Wu, M.D., Ph.D.

Michael Scheurer, Ph.D.

Department of Epidemiology

Specialization: Molecular Epidemiology of virus-associated Malignancies

Mentors:

Melissa Bondy, Ph.D. and Randa El-Zein, M.D., Ph.D.

PREDOCTORAL FELLOWS

Adam Leventhal, M.A.

Department of Behavioral Science

Subliminal Processes in Tobacco Dependence

Mentors:

Andrews Waters, Ph.D. and Bruno Breitmeyer, Ph.D.

Michael Mills, B.S.

Department of Clinical Cancer Prevention

Selenoprotein Targeting in the Chemoprevention
of Prostate Carcinogenesis

Mentors:

David Menter, Ph.D. and Richard Behringer, Ph.D.

Charles Minard, M.S.

Department of Epidemiology

Extension of a Two-stage Markov Model to Estimate
Tobacco Cessation Program Compliance and Cancer
Outcomes

Mentors:

Carol J. Etzel, Ph.D. and David W. Wetter, Ph.D.

Mala Pande, B.S.

Department of Epidemiology

Effect of Smoking and Effect of Metabolic Genetic Poly-
morphisms on Age of Onset of Hereditary Non-Polyposis
Colorectal Cancer

Mentors:

Marsha Frazier, Ph.D. and Christopher Amos, Ph.D.

Hui Zhao, M.S.

Department of Epidemiology

Application of Coalescence Process in Tumor

Mentors:

Qingyi Wei, M.D., Yun-Xin Fu, Ph.D., and Li Mao, M.D.

GRADUATE RESEARCH ASSISTANTS

3 to 6 Month Research Experiences

Lauri Andress, M.P.H.

Department of Health Disparities Research

The Effect of an Intensive Nutritional Intervention on
Breast Cancer and Physical Activity Among Pre-
menopausal African American Women

Mentors:

Jennifer Irvin-Vidrine, Ph.D., and David W. Wetter, Ph.D.

Ihuoma Azuike, B.S.

Department of Gynecologic Oncology Research

The Modification and Evaluation of a 3-Day Food Record
for a Nutrition Intervention and Breast Cancer Preven-
tion Study Among Pre-menopausal
African American Women

Mentor:

Lovell Jones, Ph.D.

Saida Ebrahim, B.S.

Department of Clinical Cancer Genetics

Genetic Epidemiology of Familial Childhood Cancer Syn-
dromes: Role of Radiation in the Risk of Multiple Neo-
plasms in Sarcoma Cohorts

Mentor:

Louise Strong, M.D.

Beatrix Foldi, M.P.H.

**Department of General Internal Medicine,
Ambulatory Treatment and Emergency Center**

Relationship Between Hyperglycemia and Outcomes in
Patients with Potentially Resectable Pancreatic Cancer

Mentor:

Mary A. Weiser, M.D.

Laurens Holmes, M.P.H.

**Department of General Internal Medicine,
Ambulatory Treatment and Emergency Center**

A Descriptive Analysis of Chemotherapy-induced Hyper-
sensitivity Reaction in Cancer Patients at MD Anderson
Cancer Center, Houston, Texas During 2005

Mentor:

Jeong Oh, M.D.

GRADUTATE RESEARCH ASSISTANTS (continued)

Anne Porter, B.S.

**Department of General Internal Medicine,
Ambulatory Treatment and Emergency Center**

The Effect of Cormorbid Conditions on Surgical Out-comes in Cancer Patients

Mentor:

Sunil K. Sahai, M.D.

Gopika Ramamurthy, M.A.

Department of General Internal Medicine

Emerging Themes in a Yoga Intervention Program --
Qualitative Analysis of Breast Patients

Mentor:

Lorenzo Cohen, Ph.D.

Rose Thelus, B.S.

Department of Clinical Cancer Prevention

The Selenium and Vitamin E Cancer Prevention Trial
(SELECT) Public Webpage Survey

Mentor:

Elise D. Cook, M.D.

Lynn Trenta, B.S.

Department of Behavioral Science

Health Care Team Approach to Smoking Cessation
(Project TEAM: Health Care Team Approach to Cancer
Prevention)

Mentor:

Alex Prokhorov, M.D., Ph.D.

Jack Tsan, M.A.

Department of Behavioral Science

Project SUCCESS

Mentors:

Alex Prokhorov, M.D., and Robert McPherson, Ph.D.

Cancer Prevention Fellowship Programs

Program Information

Description & Objectives: The Cancer Prevention Education Program at the M.D. Anderson Cancer Center prepares scientists to assume roles as research investigators in the field of cancer prevention and is designed to train research investigators from a multiplicity of health science disciplines. Applicants must select a primary mentor from the M.D. Anderson full-time faculty. The mentor must be engaged in cancer prevention research to be eligible to supervise the proposed fellowship work. Applicants must also select a co-mentor from a specialty or discipline different from that of the primary mentor.

This program includes:

- Graduate Research Assistants (GRA) - 3 months training
- Predoctoral Fellows - up to 3 years training
⇒ Next Deadline: February 1, 2006
- Post-doctoral Fellows - up to 2 years training
⇒ Next Deadline: February 1, 2006
- Stipend support, tuition, and allowance for travel and research expenses

Eligibility

To be eligible for the Cancer Prevention Fellowship Program GRA students must be currently enrolled in an accredited graduate program or medical school.

Predoctoral fellowship applicants must hold a Master's degree or equivalent from appropriate health science disciplines.

Post-doctoral fellowship applicants must have earned doctorates in health science disciplines.

Citizenship status:

These fellowships are funded by the National Cancer Institute and require that applicants be U.S. citizens or lawfully admitted permanent residents (applicants with VISAs are not eligible).

Donor supported postdoctoral positions are available to applicants without regard to citizenship.

How to Apply

For further information or to receive a fellowship application, please contact:

Dee Tello, Academic Coordinator, Department of Epidemiology, (713) 745-2495, email address: dtello@mdanderson.org

OR

Robert M. Chamberlain, Ph.D., Ashbel Smith Professor and Deputy Chair, Department of Epidemiology, Director, Cancer Prevention Fellowship Programs, (713) 792-7756, email address: rchamber@mdanderson.org

Your comments, suggestions as well as updated contact information is always welcomed!

