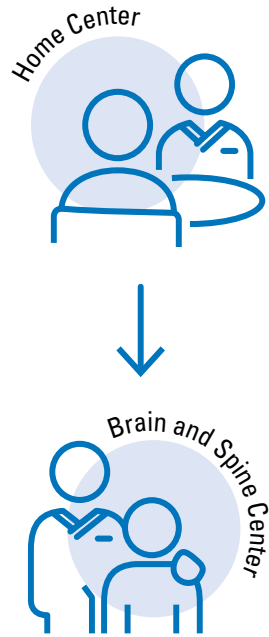


How often will I be scheduled for return NeuroHealth visits?

After your initial visit, you will be offered subsequent visits as appropriate. Additional appointments will be offered if you have any neurological problems that require long-term follow-up.



Do I have to participate in research to join the NHI?

No, your participation in research is voluntary. You can have standard NeuroHealth visits even if you do not participate in the research.

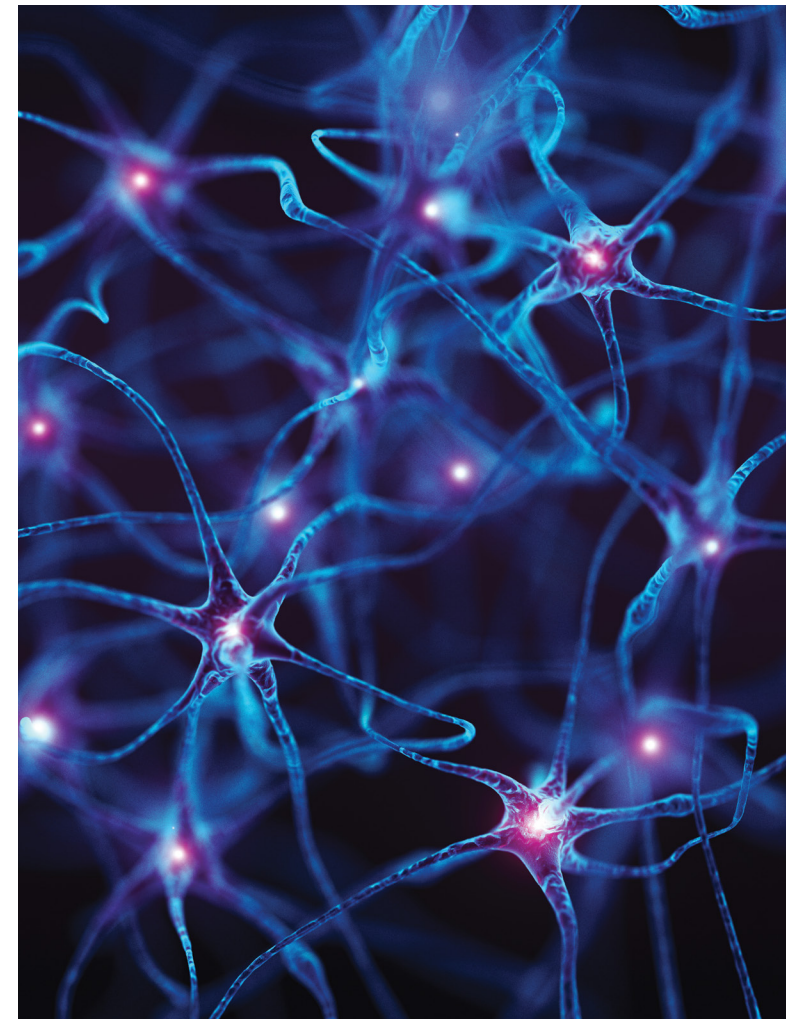
What if I have more questions?

Please ask your provider or NHI navigator for help with your questions or concerns.

~~Cancer~~
UT MD Anderson

NeuroHealth Initiative

~~Cancer~~
UT MD Anderson



What is the NeuroHealth Initiative?

The NeuroHealth Initiative (NHI) is a clinical program at UT MD Anderson that provides neurological care for patients undergoing cancer treatments. Certain cancer treatments, including chemotherapy and radiation therapy, can harm the nervous system. The goal of this program is to identify how cancer and cancer treatments affect the nervous system and support the health of your nervous system.

The NHI includes a research component that will gather information and samples to determine which patients may be at risk for developing neurological problems and how to better manage these side effects. Participation in the research is voluntary. You may still have standard NHI visits without the research.

Why should I participate in the NHI?

Sometimes cancer treatment can harm the brain, spinal cord or nerves. This damage can cause memory and hearing loss, or numbness, tingling, pain and weakness in the arms, legs and face. The NeuroHealth clinic team will monitor and manage your symptoms throughout treatment. Addressing your symptoms early may help minimize them and avoid interrupting your treatment due to these side effects.

You will also have the option to participate in a research study to understand why damage to the nervous system happens and how to prevent it. Your participation could help other patients in the future.

What other benefits do I get from participation in NHI?

You will have specialized assessments that can detect early signs of neurological issues before you start cancer treatment. Early detection may help prevent or limit your symptoms and help your physician identify the best treatment options for you. Additionally, the continued neurological assessment will help detect neurotoxicity early in treatment which may help your provider optimize the treatment plan.

How long is my participation in the NHI?

The NeuroHealth team will monitor you for any neurological symptoms throughout your treatment; subsequent visits will depend on the type of treatment you received and when neurological issues are expected.

If you experience ongoing neurological symptoms, the NeuroHealth team will continue care, including referring you to specialists as needed.

What if neurological symptoms are discovered during my visits?

If symptoms are observed during your NeuroHealth assessments requiring further evaluation or testing,

you will be referred to a specialist, such as a neurologist, and we will follow-up with your neuropsychologist.

How do I participate in the NHI?

You may speak with your NeuroHealth Navigator who gave you this brochure. The navigator will answer your questions and facilitate your NHI appointments and visits.

If you agree to participate in the research portion, the navigator will give you an informed consent document. This document will include details about participating in the NHI research study. The navigator will then schedule a baseline blood sample collection for you.

How soon will I be scheduled for my first NeuroHealth visit?

We will schedule your first visit before you start cancer treatment. Clinic staff and your navigator will keep you posted regarding your appointment.

What happens at my first NeuroHealth visit?

On the day of your appointment, you will check in at the Brain and Spine Clinic at the University of Texas MD Anderson Cancer Center Main Building, Floor 7. Next, you will meet the NeuroHealth care team who will complete a detailed neurological assessment (60 minutes), followed by a neurocognitive assessment (1 hour) and a neurophysiology visit (15 minutes).

The navigator will assist you throughout the visit. The navigator will also send you a patient reported outcomes (PRO) questionnaire through MyChart, and help you take a 5-minute survey about your symptoms.

During this visit, you will have an opportunity to participate in advanced NHI research, which includes additional detailed testing to assess your neurological health. You can speak with your navigator to learn more.